

June 24, 2021

Via E-Mail

Bryant Smalley
Chief, Water Enforcement Branch
U.S. EPA, Region 6
1201 Elm Street, Suite 500
Dallas, Texas 75270-2102
smalley.bryant@epa.gov

Kristine Talbot
Assistant Regional Counsel (6RC-EW)
U.S. EPA, Region 6
1445 Ross Avenue, Suite 1200
Dallas, TX 75202-2733
talbot.kristine@epa.gov

Damon McElroy
Environmental Engineer
U.S. EPA, Region 6
1201 Elm Street, Suite 500
Dallas, TX 75201
mcelroy.damon@epa.gov

Re: 2019 Sanitary Sewer Assessment Remedial Measures Plan
United States of America and State of Arkansas v. City of Fort Smith, Arkansas,
United States District Court, Western District of Arkansas-Case No. 2:14-cv-2266-PKH

Greetings:

The City of Fort Smith hereby submits the 2019 Sanitary Sewer Assessment Remedial Measures Plan pursuant to the Consent Decree entered in the captioned action. As a deliverable under paragraph 89 of the Consent Decree, the 2019 Sanitary Sewer Assessment Remedial Measures Plan are submitted in electronic and searchable text format and are certified in accordance with Section XVII of the Consent Decree.

We have worked diligently to complete this report despite a number of challenges we have and continue to face in implementing the Consent Decree requirements during these unprecedented times. We note that we have a significant backlog of find and fix projects such that the small delay in submitting this plan has not – and will not – caused any delay in our ongoing progress to prioritize and address needed system repairs.

We are available to discuss our selection of responsive control measures for the defects included in the

RMP.

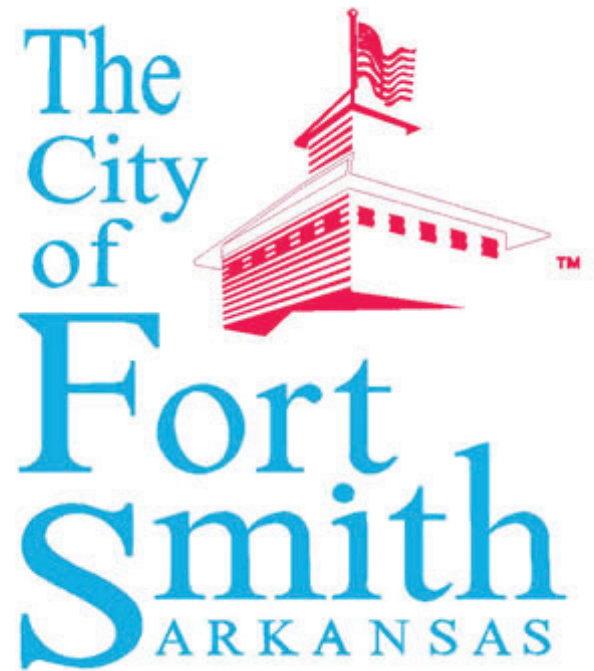
Sincerely,



Lance McAvoy
Director, Utility Department

C: Mr. Richard Healey (HEALEYR@adeq.state.ar.us)
Dane Wilson, US EPA HQ (wilson.dane@epa.gov)
James Zimny, US EPA HQ (zimny.james@epa.gov)
Tracy Rothermel, ADEQ (rothermel@adeq.state.ar.us)
Christina Baker, AR AG's Office (christina.baker@arkansasag.gov)
Chuck Harder, AR AG's Office (chuck.harder@arkansasag.gov)
Nicole Veilleux, US DOJ (Nicole.Veilleux@usdoj.gov)

Mr. Carl Geffken
Mr. Paul Calamita
Mr. Jerry Canfield

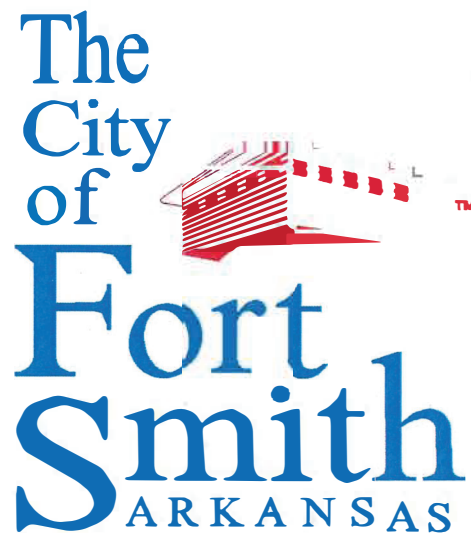


2019 Remedial Measures Plan

Sub-Basins CC01, M002, P011, P012, RB01 and Z008

Project No. 21-08-ES1

June 2021



2019 Remedial Measures Plan
Sub-Basins CC01, M002, P011, P012, RB01 and Z008

Project No. 21-08-ES1

June 2021



Table of Contents

1	Introduction.....	1
2	Project Description and System Overview	2
3	Sanitary Sewer Assessments.....	4
3.1	Assessment Procedures	4
3.1.1	Manhole Condition Assessments	4
3.1.2	Smoke Testing.....	4
3.1.3	Cleaning and CCTV Inspections	4
3.1.4	Dyed Water Flooding	4
3.2	Corrective Actions.....	4
4	Remedial Measures.....	5
4.1	Manhole Rehabilitations	5
4.2	Sewer Line Rehabilitations	6
4.3	Service Line Defects	8
5	Recommendations and Conclusions	9

List of Tables

Table 2.1	Sub-Basin Statistics	2
Table 4.1	NASSCO MACP Score Summary.....	5
Table 4.2	Manhole Rehabilitation Summary	6
Table 4.3	NASSCO PACP Score Summary	7
Table 4.4	Sewer Line Rehabilitation Summary.....	7
Table 5.1	NASSCO MACP Score 4 or 5	9
Table 5.2	NASSCO PACP Score 4 or 5	9

List of Figures

Figure 1	Sub-Basin Locations.....	3
Figure 2	Sub-Basin CC01 - NASSCO Scores	11
Figure 3	Sub-Basin M002 - NASSCO Scores	12
Figure 4	Sub-Basin P011 - NASSCO Scores.....	13
Figure 5	Sub-Basin P012 - NASSCO Scores.....	14
Figure 6	Sub-Basin RB01 - NASSCO Scores	15
Figure 7	Sub-Basin Z008 - NASSCO Scores	16

Appendices

Appendix A	MACP Scores and Manhole Recommendations
Appendix B	Manhole Rehabilitation Summary
Appendix C	PACP Scores and Sewer Line Recommendations

1 Introduction

In 2019, the City of Fort Smith, Arkansas, authorized RJN Group, Inc. (RJN) to perform a Sanitary Sewer Assessment (SSA) in four (4) sub-basins of the wastewater collection system as part of Fort Smith's Consent Decree Compliance Program. The sub-basins studied were M002, P011, P012 and Z008, consisting of 889 manholes and 199,964 linear-feet (lf) of sanitary sewer pipe. As part of their assessment scope, RJN conducted the following tasks within these four (4) sub-basins:

- Flow Monitoring
- Manhole Condition Assessment (NASSCO¹ Level 2 Inspections)
- Smoke Testing
- Cleaning and Televising of Sanitary Sewers
- Dyed Water Flooding
- Defect Analysis/Scoring

Using the results of the field inspections and defect analyses, RJN produced NASSCO MACP scores for manholes and PACP scores for sewer lines in the 2019 assessment sub-basins. Summaries of the assessment results were published in *Condition Assessment Report, 2019 Sanitary Sewer Assessment – Sub-basins: M002, P011, P012, and Z008, January 2020*. This 2019 Condition Assessment Report was submitted to the Environmental Protection Agency (EPA) in March 2020 as part of the City of Fort Smith's annual reporting requirements under the 2015 Consent Decree (CD) Compliance Program.

During the same period, the City of Fort Smith (the City) performed an SSA with in-house staff in another five (5) sub-basins of the wastewater collection system. The sub-basins studied were CC01, CP01, CP02, HP01 and RB01, consisting of 225 manholes and 42,547 lf of sanitary sewer pipe. As part of their inhouse assessment activities, the City conducted the following tasks within these five (5) sub-basins:

- Manhole Condition Assessment (NASSCO Level 2 Inspections)
- Smoke Testing
- Cleaning and Televising of Sanitary Sewers
- Defect Analysis/Scoring

Due to reported equipment failures and time constraints, the assessment of manholes in Sub-Basins CC01 and RB01 was not completed in 2019.

Using the results of the field inspections and defect analyses, the City produced NASSCO MACP and PACP scores respectively, for the remaining manholes and sewer lines in their 2019

¹ NASSCO: National Association of Sewer Service Companies
MACP: Manhole Assessment Certification Program
PACP: Pipeline Assessment Certification Program

assessment sub-basins. Summaries of the assessment results and rehabilitation recommendations were published in *Condition Assessment Report, 2019 Sanitary Sewer Assessment – Sub-Basins: CC01, CP01, CP02, HP01 and RB01, March 2020*. This 2019 In-House Condition Assessment Report was submitted to EPA in March 2020 as part of the City’s annual CD reporting requirements.

In 2020, the City of Fort Smith performed an in-house SSA in six (6) new sub-basins of the wastewater collection system. The sub-basins studied were CL01, CS01, PL01, SM01, SP01 and Z007. In addition, the City completed the assessment and MACP scoring of the manholes in Sub-Basins CC01 and RB01 from the 2019 In-House SSA. Summaries of the assessment results and recommendations were published in *Condition Assessment & Remedial Measures Report, 2020 Sanitary Sewer Assessment – Sub-Basins: CL01, CS01, PL01, SM01, SP01 and Z007, March 2021*. This 2020 In-House Condition Assessment Report was submitted to EPA in March 2021 as part of the City’s annual CD reporting requirements.

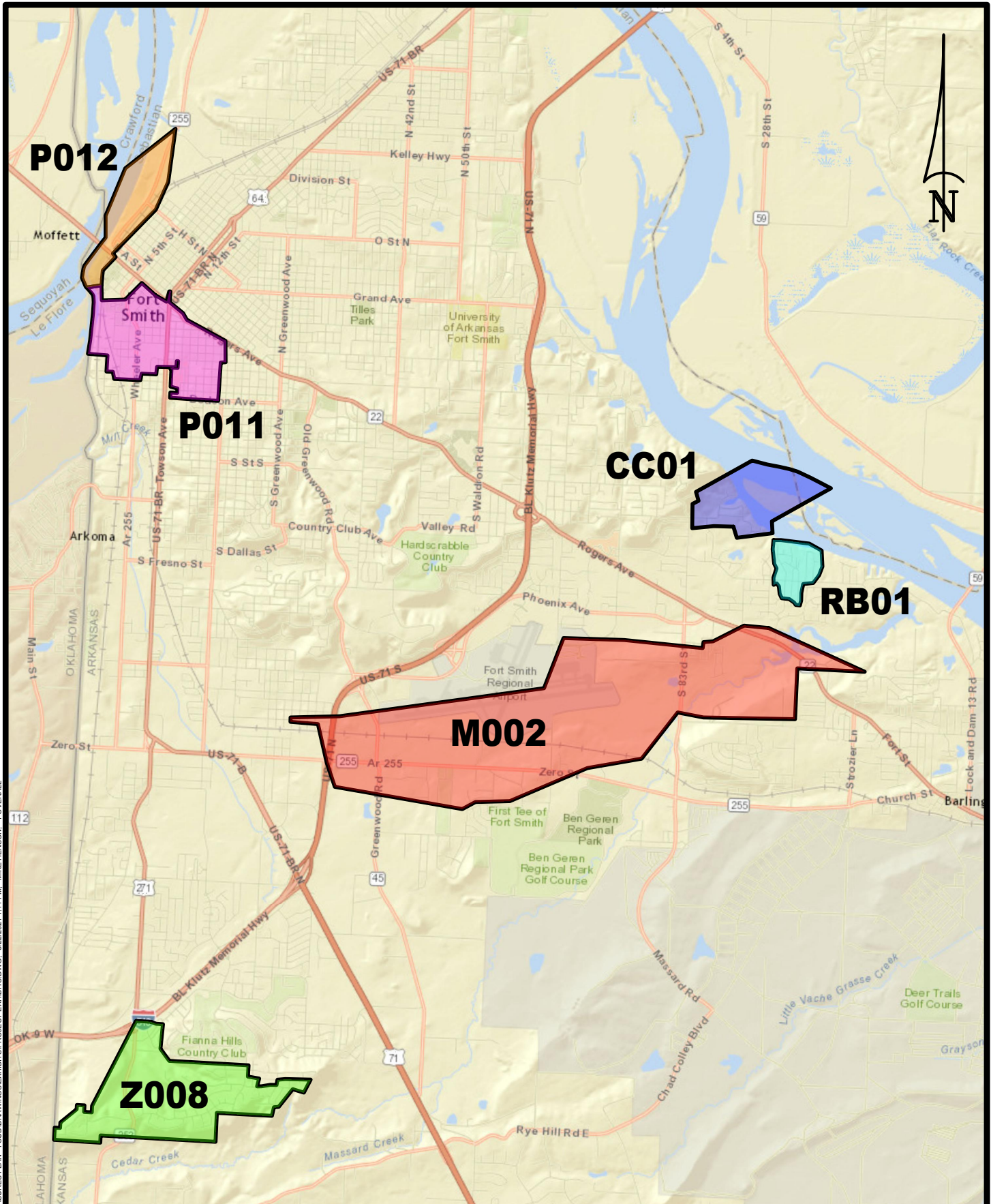
In April 2021, the City of Fort Smith authorized Hawkins-Weir Engineers, Inc. (HW) to evaluate preliminary recommendations by RJN for corrective actions on the manholes and sewer pipe segments in Sub-Basins M002, P011, P012 and Z008; and preliminary recommendations by the City of Fort Smith for corrective actions on the manholes in Sub-Basin CC01 and the manholes and sewer pipe segments in Sub-Basin RB01. Based on these evaluations, HW has prepared this 2019 Remedial Measures Plan for all six (6) sub-basins.

2 Project Description and System Overview

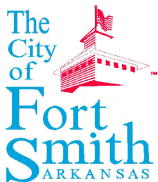
This 2019 Remedial Measures Plan presents an evaluation of the assessment results from the 2019 SSA, 2019-In House SSA, and 2020 In-House SSA. This Remedial Measures Plan also includes an evaluation of the preliminary corrective actions developed for the manholes and sewer lines in Sub-Basins M002, P011, P012 and Z008; and the previously submitted corrective actions for the manholes in Sub-Basins CC01 and RB01. Table 2.1 summarizes the quantities of manholes and sewer lines in each of the Sub-Basins CC01, M002, P011, P012, RB01 and Z008, and a map of the sub-basin locations is included as Figure 1.

Table 2.1 Sub-Basin Statistics

Sub-Basin Name	Number of Manholes	Length of Sewer Pipe	
		(lf)	(mi)
CC01	35	6,768	1.3
M002	243	70,389	13.3
P011	246	57,531	10.9
P012	50	10,251	1.9
RB01	69	13,845	2.6
Z008	350	61,793	11.7
Total	993	220,577	41.7



Z:\2108\ES1 - 2019 REMEDIAL MEASURES PLAN - FSU\DRAWINGS\EXHIBITS\PROJECT\EXHIBITS.DWG, 6/22/2021 11:11 PM, MIKE HENSON, 1-OVERALL



**2019 REMEDIAL MEASURES PLAN
FIGURE 1
SUB-BASIN LOCATIONS**



NO SCALE

PROJECT 21-08-ES1

3 Sanitary Sewer Assessments

3.1 Assessment Procedures

3.1.1 Manhole Condition Assessments

RJN and the City of Fort Smith conducted manhole inspections utilizing the NASSCO MACP Level 2 Inspection standards during the SSA projects. Level 2 inspections provide detailed documentation of existing defects and a determination of each manhole's condition. By coding or scoring observed defects, a structure score was developed for each manhole based on a scale of 1 to 5 with a score of 5 indicating that the manhole exhibits the most severe defects. This structural score provides the information necessary to develop recommendations for corrective action to resolve deficiencies, if necessary, based on the severity of the defects.

3.1.2 Smoke Testing

RJN conducted smoke testing utilizing a dual-blower method, and where applicable, individual sewers were isolated for testing. The City of Fort Smith conducted smoke testing utilizing a single-blower method, and individual sewers were not isolated for testing. Defects were noted where smoke was observed and used to identify the locations of defective service cleanouts, defective service lines, and potential mainline leaks; as well as potential cross-connections with the storm water drainage system, building downspouts, and area drains. Additional information was compiled during each test including a photograph of the defect location, the defect type, and a location address.

3.1.3 Cleaning and CCTV Inspections

RJN and the City of Fort Smith performed closed-circuit television (CCTV) inspections on all accessible non-plastic sewer lines and plastic sewer lines installed prior to 1995. NASSCO Level 2 PACP inspection procedures were used to evaluate and produce a defect score on each sewer pipe segment using a scale of 1 to 5, with a score of 5 having the most severe defects.

3.1.4 Dyed Water Flooding

RJN conducted dyed water flooding on pipelines based on specific defects identified during smoke testing, which included potential mainline leaks and potential cross-connections with the storm sewer system. Based on the CCTV condition assessments, sewer pipe segments with identified mainline leaks and having a NASSCO score of 4 or 5 were not tested with dyed water flooding. The City of Fort Smith did not conduct dyed water flooding on the sub-basins in their 2019 or 2020 SSAs.

3.2 Corrective Actions

In addition to the inspections and assessments reported in their respective Condition Assessment Reports, RJN provided preliminary corrective actions for the manholes and sewer pipe segments within Sub-Basins M002, P011, P012 and Z008; and the City prepared remedial measures for the manholes in Sub-Basins CC01 and RB01. These preliminary corrective actions and remedial measures were reviewed and used to develop the recommended Remedial Measures presented in this Report. Some manholes and sewer pipe segments were not inspected during the SSA projects, and these are indicated in the subsequent sections of this report as "Not Inspected."

4 Remedial Measures

4.1 Manhole Rehabilitations

As noted in Table 2.1, Sub-Basins CC01, M002, P011, P012, RB01 and Z008 include a total of 993 manholes. The Condition Assessment Reports for the 2019 SSA and the 2020 In-House SSA provided details on the inspection of 796 of those manholes and identified 197 manholes that still require an assessment inspection. A summary of manholes in each sub-basin, with a breakdown of the NASSCO MACP structure scores is provided in Table 4.1. Figure 2 through Figure 7 show the locations of the manholes in each of these sub-basins (see pages 11 – 16).

Table 4.1 NASSCO MACP Score Summary

Sub-Basin Name	Not Inspected	No Scorable Defect	NASSCO MACP Score					Total
			1	2	3	4	5	
CC01	4	0	28	0	1	1	1	35
M002	34	94	20	3	70	10	12	243
P011	85	102	7	3	33	5	11	246
P012	6	41	0	0	3	0	0	50
RB01	19	0	45	0	0	1	4	69
Z008	49	162	13	3	84	14	25	350
Total	197	399	113	9	191	31	53	993

At the conclusion of their respective 2019 SSA and 2020 SSA projects, RJN provided preliminary recommendations for corrective actions for the manholes in Sub-Basins M002, P011, P012 and Z008; and the City of Fort Smith developed remedial measures for the manholes in Sub-Basins CC01 and RB01.² Hawkins-Weir reviewed the NASSCO MACP Level 2 inspection reports prepared by RJN and the City of Fort Smith, and then performed independent field inspections of manholes with a MACP score of 4 or 5. HW then performed a second evaluation of these manholes (a total of 84) and prepared updated recommendations for Remedial Measures.

A summary is provided in Table 4.2 of the recommended corrective actions for all inspected manholes. A list of all manholes in Sub-Basins CC01, M002, P011, P012, RB01 and Z008 is included in Appendix A along with the individual structure scores and recommended rehabilitation actions. The Appendix A list also identifies those manholes that were not inspected. Appendix B includes a list of 47 manholes from these six (6) sub-basins along with recommendations for specific rehabilitation work in lieu of manhole replacement.

² See Appendix A of *Condition Assessment & Remedial Measures Report, 2020 Sanitary Sewer Assessment – Sub-Basins: CL01, CS01, PL01, SM01, SP01 and Z007, March 2021.*

Table 4.2 Manhole Rehabilitation Summary

Sub-Basin Name	CMOM	Replace	Rehabilitate	Not Inspected	Total
CC01	29	0	2	4	35
M002	191	7	11	34	243
P011	146	9	6	85	246
P012	44	0	0	6	50
RB01	49	0	1	19	69
Z008	272	2	27	49	350
Total	731	18	47	197	993

To date, 84 manholes within Sub-Basins CC01, M002, P011, P012 and Z008 have received a NASSCO MACP score of 4 or 5. Of those 84 manholes, 19 are recommended for the City’s Capacity, Management, Operations, and Maintenance (CMOM) program rather than replacement or rehabilitation. In cases where a manhole with a MACP score of 4 or 5 is recommended for CMOM, the original assessment resulted in the manhole being classified as having a significant defect based solely on MACP scoring, and thus it was considered in poor condition. Upon further inspection and evaluation, the manhole was recommended for inclusion in the CMOM program if the defect was found to be superficial or cosmetic, or if in the opinion of the inspector the defect is not a potential source of infiltration and inflow (I&I), is not a potential point for a sanitary sewer overflow (SSO), or it does not exhibit signs of structural failure. For example, a manhole with a fractured concrete cap around the frame and cover is not expected to be a point source for I&I or to affect the structural integrity of the manhole if the frame seal is intact and no other structural defects are observed.

4.2 Sewer Line Rehabilitations

Sub-Basin M002, P011, P012, RB01 and Z008 include 211,789 lf (40.1 mi) of sewer line. The 2019 SSA and 2020 In-House SSA included the inspection of 139,185 lf (26.4 mi) of sewer line within these five (5) sub-basins, with 72,604 lf (13.8 mi) of sewers remaining to be inspected. Typically, all non-plastic sewer pipe and plastic sewer pipe installed before 1995 was inspected with CCTV during the SSA. However, some sewer pipe segments were not inspected due to being inaccessible. A total of 180,724 lf (34.2 mi) of sewer lines were cleaned during the 2019 SSA and 2019 In-House SSA. A summary of sewer lines in each sub-basin, with a breakdown of the NASSCO PACP structure scores is provided in Table 4.3. Figure 2 through Figure 7, included at the end of this Remedial Measures Plan, show the locations of the sewer lines in each of these sub-basins.

Table 4.3 NASSCO PACP Score Summary

Sub-Basin Name	Not Inspected (lf)	No Structural Defects (lf)	NASSCO PACP Score (lf)					Total (lf)
			1	2	3	4	5	
M002	17,580	33,476	1,979	1,637	10,253	1,738	3,438	70,101
P011	18,846	4,869	177	3,144	4,835	5,466	19,230	56,567
P012	8,329	1,153	0	0	381	0	172	10,035
RB01	3,808	2,700	0	1,983	2,906	871	1,577	13,845
Z008	24,041	28,582	2,816	810	2,127	1,028	1,837	61,241
Total	72,604	70,780	4,972	7,574	20,502	9,103	26,254	211,789

At the conclusion of the 2019 SSA project, RJN prepared preliminary corrective action recommendations for the sewer pipe segments in Sub-Basins M002, P011, P012 and Z008, similar to those prepared for the associated manholes. Although the City conducted the SSA inspections and PACP scoring for most sewer pipe segments in Sub-Basin RB01, the City did not prepare any corrective action recommendations. Hawkins-Weir reviewed all previous corrective action recommendations and performed an independent review of the CCTV video for sewer pipe segments having a PACP score of 4 or 5 (a total of 35,357 lf). HW then performed a second evaluation of all sewer assessment results and prepared updated recommendations for Remedial Measures.

A summary is provided in Table 4.4 of the recommended corrective actions for all inspected sewer pipes. A list of the sewer pipe segments in Sub-Basins M002, P011, P012, RB01 and Z008 is included in Appendix C along with the individual structure scores and recommended rehabilitation actions. The Appendix C list also identifies those sewer pipe segments that were inaccessible, not inspected, or were only cleaned.

Table 4.4 Sewer Line Rehabilitation Summary

Sub-Basin Name	Not Inspected (lf)	CMOM (lf)	CIPP (lf)	Pipe Burst (lf)	Open Cut (lf)	Point Repair		Total (lf)
						Quantity (ea)	Length (lf)	
M002	17,580	48,551	0	715	1,410	7	1,845	70,101
P011	18,846	13,025	3,136	1,160	13,435	25	6,965	56,567
P012	8,329	1,534	0	0	172	0	0	10,035
RB01	3,808	8,879	0	0	0	5	1,158	13,845
Z008	24,041	35,707	0	0	489	7	1,004	61,241
Total	72,604	107,696	3,136	1,875	15,506	44	10,972	211,789

To date, 35,357 lf of sewer pipe within Sub-Basins M002, P011, P012, RB01 and Z008 have received a NASSCO PACP score of 4 or 5. Of this amount, approximately 3,868 lf of sewer pipe is recommended for the City's CMOM program rather than replacement or rehabilitation. Similar to the previous discussion about manhole scoring, where a sewer pipe segment with a PACP score of 4 or 5 is recommended for CMOM, the original assessment resulted in the pipe segment being classified as having a significant defect based solely on PACP scoring. Upon further review and evaluation of the CCTV inspection video, the sewer pipe segment was recommended for the CMOM program if in the opinion of the reviewer the defect is not a potential source of I&I, is not a potential SSO point, or does not exhibit signs of pipe structure failure.

4.3 Service Line Defects

Smoke testing was conducted on 186,455 lf of sanitary sewer lines in Sub Basins M002, P011, P012 and Z008 resulting in the identification of 179 defects. RJN prepared and submitted *The Private Service Line Report, January 2020* for the basins included in the 2019 SSA, which contained information on the defects including the location addresses, descriptions of the defects, and site photographs showing location and magnitude of the smoke leaks.

Smoke testing was conducted on 10,037 lf of sanitary sewer lines in Sub-Basin RB01 resulting in the identification of 44 defects. The City of Fort Smith included a list of the service line defects in Appendix C of the 2019 In-House Condition Assessment Report.

5 Recommendations and Conclusions

This Remedial Measures Plan presents the results of inspections, assessments and recommended remedial measures for 796 manholes and 139,185 lf (26.4 mi) of sanitary sewer pipe within Sub-Basins CC01, M002, P011, P012, RB01 and Z008. The City of Fort Smith’s Consent Decree Compliance Program requires that all manholes and sewer lines receiving a NASSCO MACP or PACP score of 4 or 5 be replaced, repaired, rehabilitated, or placed in the City’s CMOM program for further monitoring and maintenance. Tables 5.1 and 5.3 provide a summary of the recommendations for manholes with a NASSCO MACP score of 4 or 5 and sewer lines with a NASSCO PACP score of 4 or 5, respectively. The recommendations for the remaining manholes and sewer pipe segments are detailed in Appendices A through C.

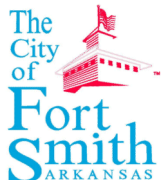
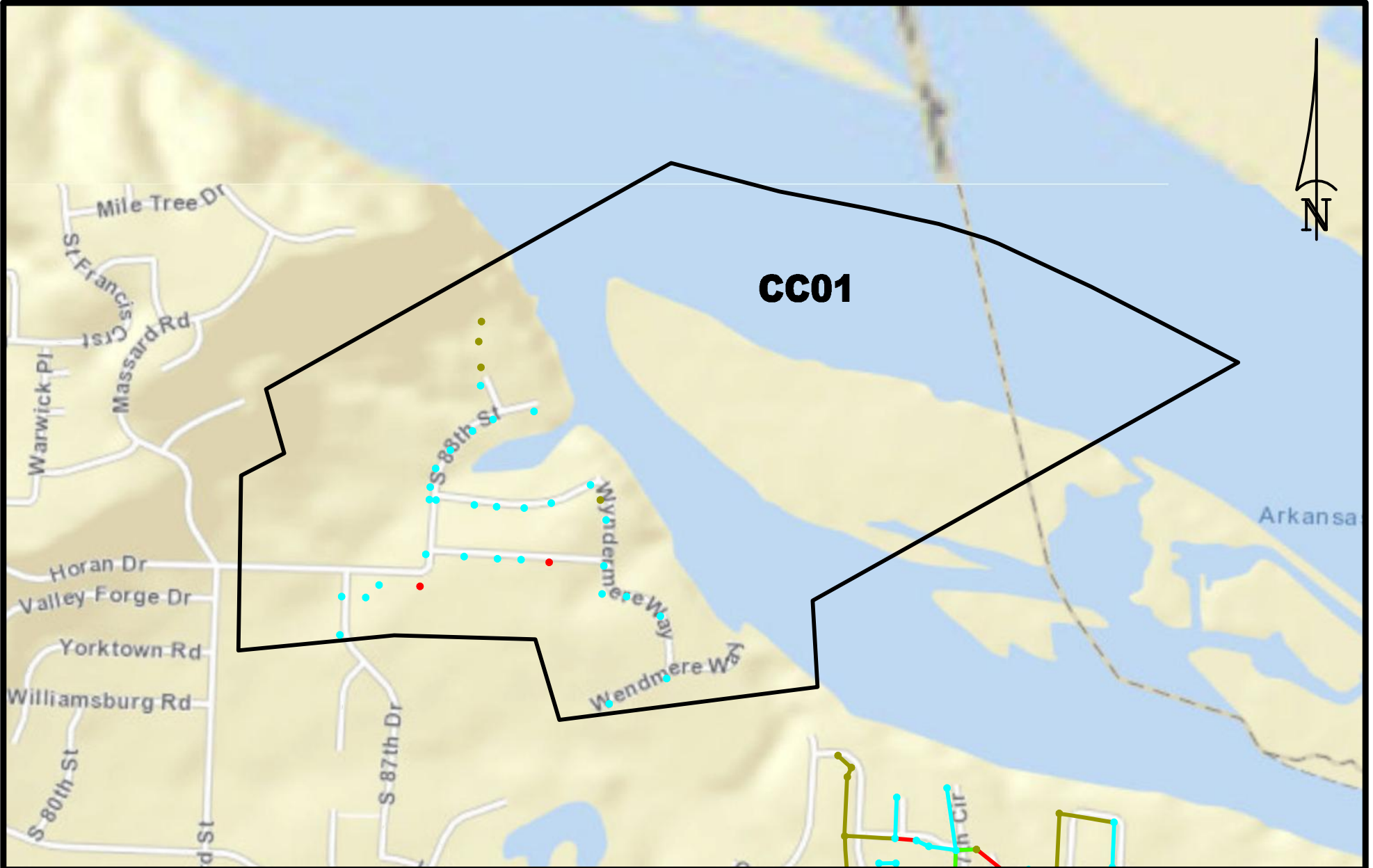
Table 5.1 NASSCO MACP Score 4 or 5

Sub-Basin Name	Manholes Rated 4 or 5	Manhole Recommendations		
		CMOM	Rehabilitation	Replacement
CC01	2	0	2	0
M002	22	4	11	7
P011	16	1	6	9
P012	0	0	0	0
RB01	5	4	1	0
Z008	39	10	27	2
Total	84	19	47	18

Table 5.2 NASSCO PACP Score 4 or 5

Sub-Basin Name	Sewer Lines Rated 4 or 5 (lf)	Sewer Line Recommendation (lf)				
		CMOM	Point Repair	CIPP	Pipe Burst	Open Cut
M002	5,176	1,206	1,845	0	715	1,410
P011	24,696	0	6,965	3,136	1,160	13,435
P012	172	0	0	0	0	172
RB01	2,448	1,290	1,157	0	0	0
Z008	2,865	1,372	1,004	0	0	489
Total	35,357	3,868	10,971	3,136	1,875	15,506

This Page Intentionally Left Blank



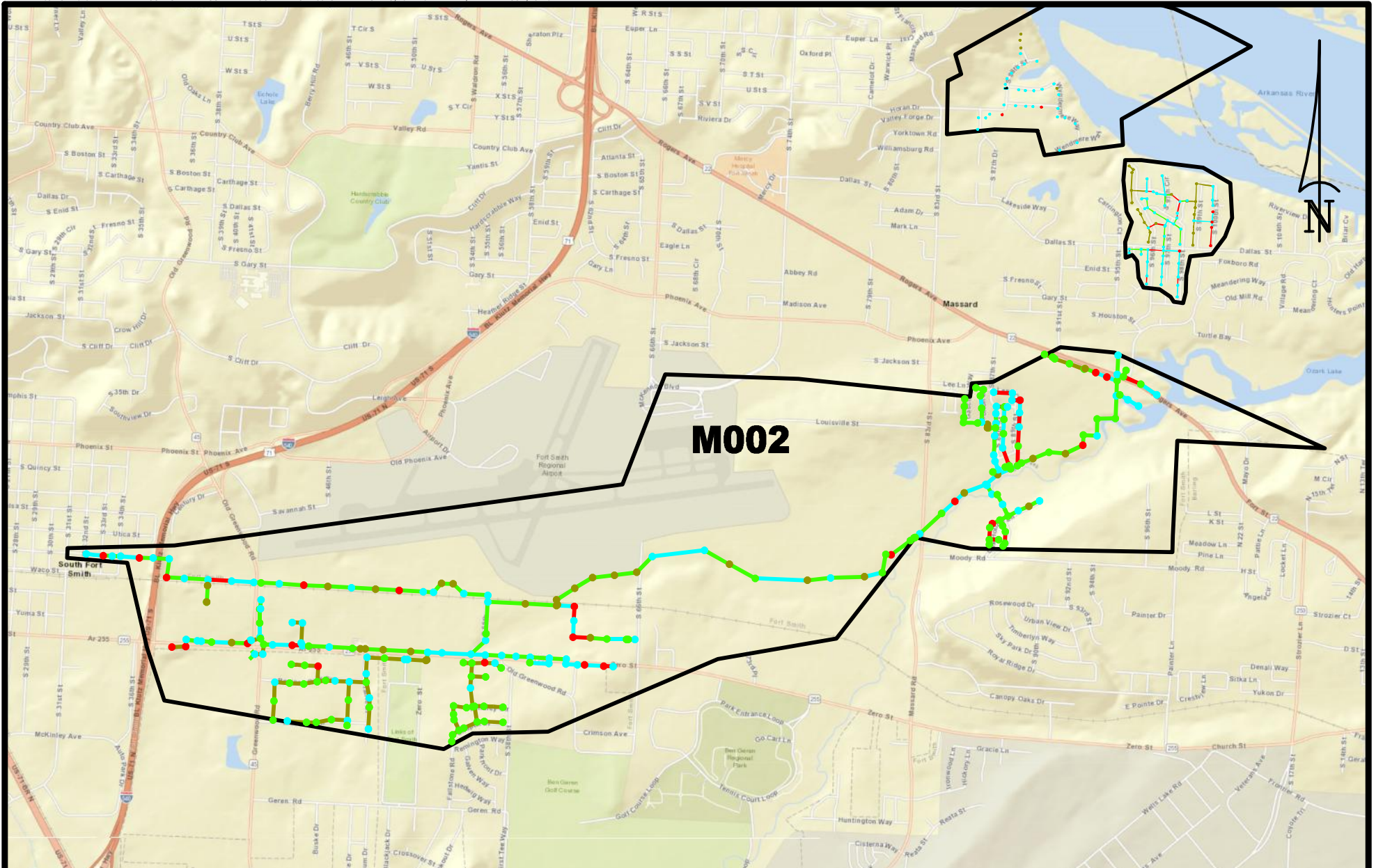
MANHOLE		GRAVITY MAIN	
●	NO STRUCTURAL DEFECT		
●	1-3		
●	4-5		
●	NOT INSPECTED		

2019 REMEDIAL MEASURES PLAN
 FIGURE 2
 SUB-BASIN CC01
 NASSCO SCORES

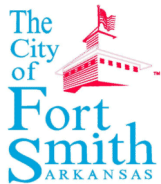
NO SCALE

PROJECT 21-08-ES1





M002



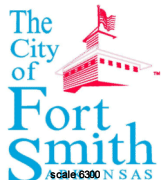
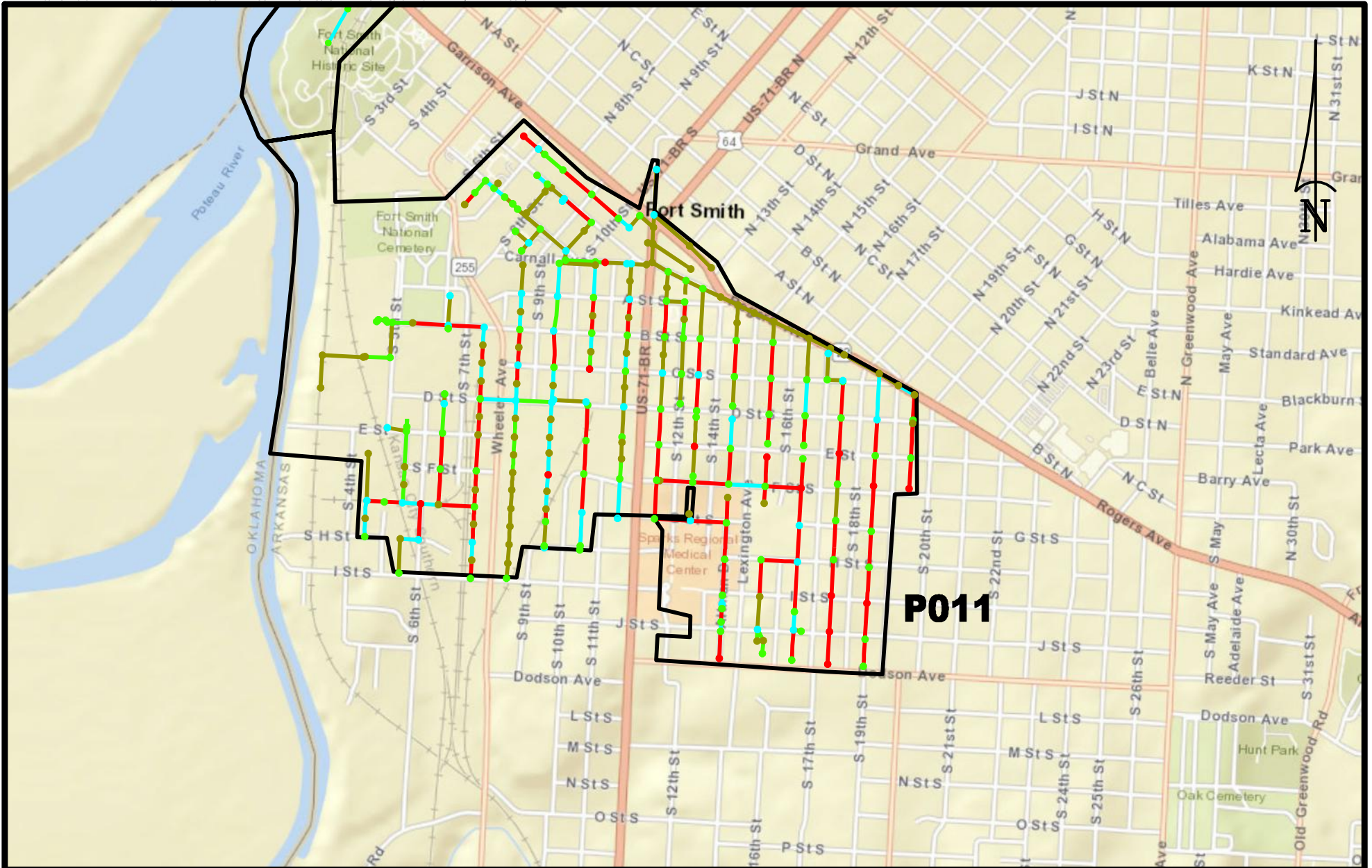
MANHOLE		GRAVITY MAIN	
●	NO STRUCTURAL DEFECT	—	
●	1-3	—	
●	4-5	—	
●	NOT INSPECTED	—	

2019 REMEDIAL MEASURES PLAN
 FIGURE 3
 SUB-BASIN M002
 NASSCO SCORES

NO SCALE

PROJECT 21-08-ES1





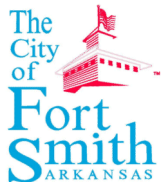
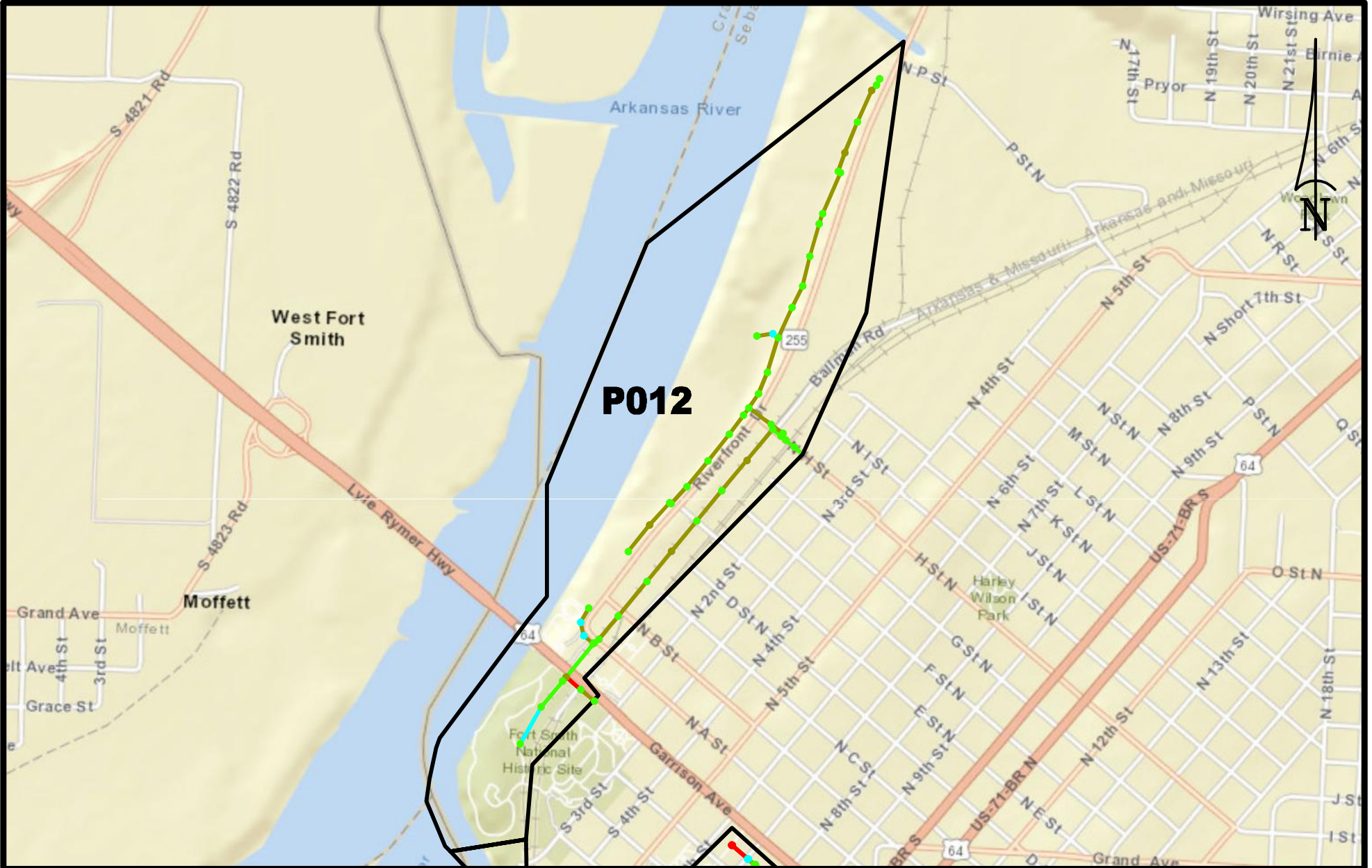
MANHOLE	GRAVITY MAIN
● NO STRUCTURAL DEFECT	—
● 1-3	—
● 4-5	—
● NOT INSPECTED	—

2019 REMEDIAL MEASURES PLAN
 FIGURE 4
 SUB-BASIN P011
 NASSCO SCORES

NO SCALE

PROJECT 21-08-ES1





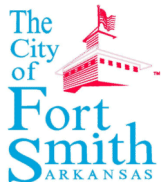
MANHOLE	GRAVITY MAIN
● NO STRUCTURAL DEFECT	—
● 1-3	—
● 4-5	—
● NOT INSPECTED	—

2019 REMEDIAL MEASURES PLAN
 FIGURE 5
 SUB-BASIN P012
 NASSCO SCORES

NO SCALE

PROJECT 21-08-ES1





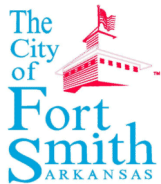
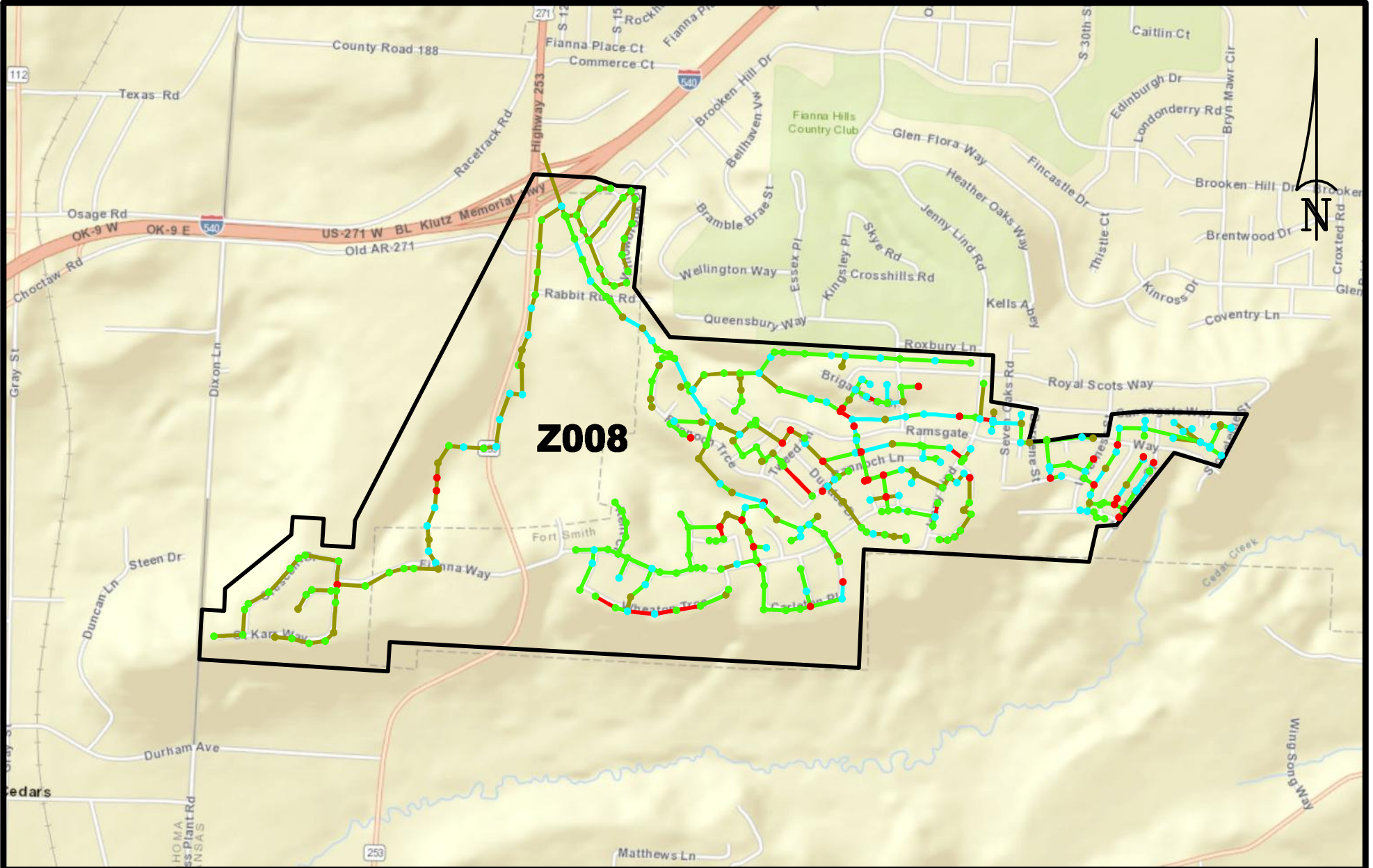
MANHOLE		GRAVITY MAIN	
●	NO STRUCTURAL DEFECT	—	
●	1-3	—	
●	4-5	—	
●	NOT INSPECTED	—	

2019 REMEDIAL MEASURES PLAN
 FIGURE 6
 SUB-BASIN RB01
 NASSCO SCORES

NO SCALE

PROJECT 21-08-ES1





MANHOLE		GRAVITY MAIN	
●	NO STRUCTURAL DEFECT	—	
●	1-3	—	
●	4-5	—	
●	NOT INSPECTED	—	

2019 REMEDIAL MEASURES PLAN
 FIGURE 7
 SUB-BASIN Z008
 NASSCO SCORES

NO SCALE

PROJECT 21-08-ES1



APPENDIX A

MACP Scores and Manhole Recommendations

MACP Scores and Manhole Recommendations

Sub-Basin Name	ID	MACP Structural Score	Str Quick Score	Recommended Rehab Actions
CC01	CC01-0030	1	1400	CMOM
CC01	CC01-0040	1	1400	CMOM
CC01	CC01-0050	1	1400	CMOM
CC01	CC01-0060	1	1400	CMOM
CC01	CC01-0070	1	1400	CMOM
CC01	CC01-0080	1	1400	CMOM
CC01	CC01-0090	Not Inspected	-	-
CC01	CC01-0100	1	1400	CMOM
CC01	CC01-0110	1	1400	CMOM
CC01	CC01-0120	1	1400	CMOM
CC01	CC01-0130	5	5114	RELIN
CC01	CC01-0140	3	3114	CMOM
CC01	CC01-0150	1	1400	CMOM
CC01	CC01-0160	1	1400	CMOM
CC01	CC01-0170	1	1400	CMOM
CC01	CC01-0180	1	1400	CMOM
CC01	CC01-0190	4	4114	RELIN
CC01	CC01-0200	1	1400	CMOM
CC01	CC01-0210	1	1400	CMOM
CC01	CC01-0220	1	1400	CMOM
CC01	CC01-0230	1	1400	CMOM
CC01	CC01-0240	1	1400	CMOM
CC01	CC01-0250	1	1400	CMOM
CC01	CC01-0260	1	1400	CMOM
CC01	CC01-0270	1	1400	CMOM
CC01	CC01-0280	1	1400	CMOM
CC01	CC01-0290	1	1400	CMOM
CC01	CC01-0300	1	1400	CMOM
CC01	CC01-0310	1	1400	CMOM
CC01	CC01-0320	1	1400	CMOM
CC01	CC01-0330	1	1400	CMOM
CC01	CC01-0340	1	1400	CMOM
CC01	CC01-0350	Not Inspected	-	-
CC01	CC01-0360	Not Inspected	-	-
CC01	CC01-0370	Not Inspected	-	-
M002	M002-0070	No Structural Defect	0000	CMOM
M002	M002-0080	5	5131	RELIN
M002	M002-0085	4	4137	REPLACE
M002	M002-0090	Not Inspected	-	-
M002	M002-0091	No Structural Defect	0000	CMOM
M002	M002-0092	No Structural Defect	0000	CMOM
M002	M002-0093	No Structural Defect	0000	CMOM
M002	M002-0094	No Structural Defect	0000	CMOM
M002	M002-0100	3	3100	CMOM
M002	M002-0110	No Structural Defect	0000	CMOM
M002	M002-0120	3	3111	CMOM
M002	M002-0130	3	3100	CMOM
M002	M002-0140	No Structural Defect	0000	CMOM

MACP Scores and Manhole Recommendations

Sub-Basin Name	ID	MACP Structural Score	Str Quick Score	Recommended Rehab Actions
M002	M002-0150	No Structural Defect	0000	CMOM
M002	M002-0160	3	3100	CMOM
M002	M002-0170	No Structural Defect	0000	CMOM
M002	M002-0180	5	5132	REPLACE
M002	M002-0190	Not Inspected	-	-
M002	M002-0200	No Structural Defect	0000	CMOM
M002	M002-0210	Not Inspected	-	-
M002	M002-0220	No Structural Defect	0000	CMOM
M002	M002-0230	No Structural Defect	0000	CMOM
M002	M002-0240	No Structural Defect	0000	CMOM
M002	M002-0250	3	3121	CMOM
M002	M002-0260	1	1100	CMOM
M002	M002-0270	5	5100	RELINE
M002	M002-0280	3	3200	CMOM
M002	M002-0290	3	3200	CMOM
M002	M002-0300	3	3100	CMOM
M002	M002-0310	No Structural Defect	0000	CMOM
M002	M002-0320	No Structural Defect	0000	CMOM
M002	M002-0330	No Structural Defect	0000	CMOM
M002	M002-0340	3	3200	CMOM
M002	M002-0350	No Structural Defect	0000	CMOM
M002	M002-0360	No Structural Defect	0000	CMOM
M002	M002-0370	No Structural Defect	0000	CMOM
M002	M002-0380	3	3100	CMOM
M002	M002-0390	3	3100	CMOM
M002	M002-0400	Not Inspected	-	-
M002	M002-0410	3	3100	CMOM
M002	M002-0420	No Structural Defect	0000	CMOM
M002	M002-0430	3	3100	CMOM
M002	M002-0440	3	3100	CMOM
M002	M002-0450	3	3100	CMOM
M002	M002-0455	No Structural Defect	0000	CMOM
M002	M002-0460	3	3100	CMOM
M002	M002-0470	3	3100	CMOM
M002	M002-0480	2	2111	CMOM
M002	M002-0490	Not Inspected	-	-
M002	M002-0500	5	5133	RELINE
M002	M002-0510	No Structural Defect	0000	CMOM
M002	M002-0520	3	3121	CMOM
M002	M002-0530	No Structural Defect	0000	CMOM
M002	M002-0532	No Structural Defect	0000	CMOM
M002	M002-0540	5	5113	REPLACE
M002	M002-0550	No Structural Defect	0000	CMOM
M002	M002-0560	No Structural Defect	0000	CMOM
M002	M002-0570	Not Inspected	-	-
M002	M002-0580	3	3211	CMOM
M002	M002-0590	Not Inspected	-	-
M002	M002-0600	Not Inspected	-	-

MACP Scores and Manhole Recommendations

Sub-Basin Name	ID	MACP Structural Score	Str Quick Score	Recommended Rehab Actions
M002	M002-0610	Not Inspected	-	-
M002	M002-0620	3	3100	CMOM
M002	M002-0630	3	3100	CMOM
M002	M002-0640	Not Inspected	-	-
M002	M002-0650	Not Inspected	-	-
M002	M002-0660	Not Inspected	-	-
M002	M002-0670	Not Inspected	-	-
M002	M002-0680	Not Inspected	-	-
M002	M002-0690	Not Inspected	-	-
M002	M002-0700	Not Inspected	-	-
M002	M002-0710	4	4132	REPLACE
M002	M002-0720	3	3121	CMOM
M002	M002-0740	5	5100	REPAIR PIPE SEAL
M002	M002-0750	Not Inspected	-	-
M002	M002-0760	No Structural Defect	0000	CMOM
M002	M002-0770	Not Inspected	-	-
M002	M002-0780	1	1500	CMOM
M002	M002-0790	1	1200	CMOM
M002	M002-0800	1	1300	CMOM
M002	M002-0810	3	3212	CMOM
M002	M002-0820	3	3223	CMOM
M002	M002-0830	1	1400	CMOM
M002	M002-0840	3	3322	CMOM
M002	M002-0850	No Structural Defect	0000	CMOM
M002	M002-0860	2	2100	CMOM
M002	M002-0870	3	3114	CMOM
M002	M002-0880	3	3221	CMOM
M002	M002-0900	3	3611	CMOM
M002	M002-0910	3	3221	CMOM
M002	M002-0920	4	4131	REPLACE
M002	M002-0930	4	4131	RELINING
M002	M002-0935	3	3212	CMOM
M002	M002-0940	1	1200	CMOM
M002	M002-0950	3	3112	CMOM
M002	M002-0960	Not Inspected	-	-
M002	M002-0970	Not Inspected	-	-
M002	M002-0980	Not Inspected	-	-
M002	M002-0990	Not Inspected	-	-
M002	M002-1000	3	3121	CMOM
M002	M002-1005	3	3122	CMOM
M002	M002-1010	4	4135	REPLACE
M002	M002-1020	2	2111	CMOM
M002	M002-1030	No Structural Defect	0000	CMOM
M002	M002-1040	3	3311	CMOM
M002	M002-1050	3	3111	CMOM
M002	M002-1060	No Structural Defect	0000	CMOM
M002	M002-1070	1	1100	CMOM
M002	M002-1080	No Structural Defect	0000	CMOM

MACP Scores and Manhole Recommendations

Sub-Basin Name	ID	MACP Structural Score	Str Quick Score	Recommended Rehab Actions
M002	M002-1090	No Structural Defect	0000	CMOM
M002	M002-1090A	1	1300	CMOM
M002	M002-1090B	3	3221	CMOM
M002	M002-1098	1	1100	CMOM
M002	M002-1100	3	3211	CMOM
M002	M002-1110	4	4132	CMOM
M002	M002-1120	Not Inspected	-	-
M002	M002-1130	No Structural Defect	0000	CMOM
M002	M002-1140	3	3100	CMOM
M002	M002-1140A	3	3200	CMOM
M002	M002-1150	3	3111	CMOM
M002	M002-1160	4	4131	CMOM
M002	M002-1170	4	4133	RELIN
M002	M002-1180	3	3322	CMOM
M002	M002-1190	3	3411	CMOM
M002	M002-1200	Not Inspected	-	-
M002	M002-1210	Not Inspected	-	-
M002	M002-1220	3	3211	CMOM
M002	M002-1230	3	3400	CMOM
M002	M002-1240	5	5133	CMOM
M002	M002-1250	Not Inspected	-	-
M002	M002-1260	3	3300	CMOM
M002	M002-1270	Not Inspected	-	-
M002	M002-1280	5	5133	FRAME AND COVER
M002	M002-1290	3	3200	CMOM
M002	M002-1295	No Structural Defect	0000	CMOM
M002	M002-1300	3	3211	CMOM
M002	M002-1310	3	3400	CMOM
M002	M002-1320	3	3300	CMOM
M002	M002-1330	3	3400	CMOM
M002	M002-1340	5	5135	REPLACE
M002	M002-1350	3	3500	CMOM
M002	M002-1360	3	3400	CMOM
M002	M002-1370	4	4132	RELIN
M002	M002-1380	3	3100	CMOM
M002	M002-1385	3	3400	CMOM
M002	M002-1390	4	4132	RELIN
M002	M002-1400	3	3311	CMOM
M002	M002-1460	5	5333	RELIN
M002	M002-1470	3	3200	CMOM
M002	M002-1480	No Structural Defect	0000	CMOM
M002	M002-1490	No Structural Defect	0000	CMOM
M002	M002-1495	No Structural Defect	0000	CMOM
M002	M002-1510	No Structural Defect	0000	CMOM
M002	M002-1520	3	3200	CMOM
M002	M002-1525	No Structural Defect	0000	CMOM
M002	M002-1530	3	3100	CMOM
M002	M002-1535	No Structural Defect	0000	CMOM

MACP Scores and Manhole Recommendations

Sub-Basin Name	ID	MACP Structural Score	Str Quick Score	Recommended Rehab Actions
M002	M002-1540	No Structural Defect	0000	CMOM
M002	M002-1550	No Structural Defect	0000	CMOM
M002	M002-1560	No Structural Defect	0000	CMOM
M002	M002-1570	No Structural Defect	0000	CMOM
M002	M002-1580	No Structural Defect	0000	CMOM
M002	M002-1590	No Structural Defect	0000	CMOM
M002	M002-1600	No Structural Defect	0000	CMOM
M002	M002-1610	No Structural Defect	0000	CMOM
M002	M002-1620	No Structural Defect	0000	CMOM
M002	M002-1630	No Structural Defect	0000	CMOM
M002	M002-1640	No Structural Defect	0000	CMOM
M002	M002-1650	No Structural Defect	0000	CMOM
M002	M002-1660	No Structural Defect	0000	CMOM
M002	M002-1670	No Structural Defect	0000	CMOM
M002	M002-1680	No Structural Defect	0000	CMOM
M002	M002-1700	3	3100	CMOM
M002	M002-1710	3	3200	CMOM
M002	M002-1720	No Structural Defect	0000	CMOM
M002	M002-1730	1	1100	CMOM
M002	M002-1740	No Structural Defect	0000	CMOM
M002	M002-1750	3	3200	CMOM
M002	M002-1760	Not Inspected	-	-
M002	M002-1770	1	1100	CMOM
M002	M002-1780	No Structural Defect	0000	CMOM
M002	M002-1790	5	5100	CMOM
M002	M002-1800	No Structural Defect	0000	CMOM
M002	M002-1810	No Structural Defect	0000	CMOM
M002	M002-1820	No Structural Defect	0000	CMOM
M002	M002-1830	No Structural Defect	0000	CMOM
M002	M002-1840	No Structural Defect	0000	CMOM
M002	M002-1850	No Structural Defect	0000	CMOM
M002	M002-1860	No Structural Defect	0000	CMOM
M002	M002-2460	Not Inspected	-	-
M002	M002-2470	Not Inspected	-	-
M002	M002-2480	1	1100	CMOM
M002	M002-2490	3	3100	CMOM
M002	M002-2500	No Structural Defect	0000	CMOM
M002	M002-2510	3	3111	CMOM
M002	M002-2520	3	3100	CMOM
M002	M002-2530	No Structural Defect	0000	CMOM
M002	M002-2540	1	1100	CMOM
M002	M002-2550	3	3100	CMOM
M002	M002-2560	No Structural Defect	0000	CMOM
M002	M002-2570	No Structural Defect	0000	CMOM
M002	M002-2580	5	5333	RELIN
M002	M002-2590	No Structural Defect	0000	CMOM
M002	M002-2600	No Structural Defect	0000	CMOM
M002	M002-2610	No Structural Defect	0000	CMOM

MACP Scores and Manhole Recommendations

Sub-Basin Name	ID	MACP Structural Score	Str Quick Score	Recommended Rehab Actions
M002	M002-2620	No Structural Defect	0000	CMOM
M002	M002-2630	1	1100	CMOM
M002	M002-2640	No Structural Defect	0000	CMOM
M002	M002-2660	1	1100	CMOM
M002	M002-2670	No Structural Defect	0000	CMOM
M002	M002-2680	1	1100	CMOM
M002	M002-2690	No Structural Defect	0000	CMOM
M002	M002-2700	1	1200	CMOM
M002	M002-2710	No Structural Defect	0000	CMOM
M002	M002-2720	No Structural Defect	0000	CMOM
M002	M002-2730	No Structural Defect	0000	CMOM
M002	M002-2740	1	1100	CMOM
M002	M002-2750	No Structural Defect	0000	CMOM
M002	M002-2760	No Structural Defect	0000	CMOM
M002	M002-2770	Not Inspected	-	-
M002	M002-2780	Not Inspected	-	-
M002	M002-2790	3	3100	CMOM
M002	M002-2800	No Structural Defect	0000	CMOM
M002	M002-2810	No Structural Defect	0000	CMOM
M002	M002-2820	No Structural Defect	0000	CMOM
M002	M002-2830	No Structural Defect	0000	CMOM
M002	M002-2840	No Structural Defect	0000	CMOM
M002	M002-2850	No Structural Defect	0000	CMOM
M002	M002-2860	No Structural Defect	0000	CMOM
M002	M002-2870	No Structural Defect	0000	CMOM
M002	M002-2880	No Structural Defect	0000	CMOM
M002	M002-2890	3	3100	CMOM
M002	M002-2900	3	3200	CMOM
M002	M002-2910	3	3200	CMOM
M002	M002-2920	Not Inspected	-	-
M002	M002-2930	Not Inspected	-	-
M002	M002-2940	No Structural Defect	0000	CMOM
P011	P011-0010	3	3100	CMOM
P011	P011-0020	3	3100	CMOM
P011	P011-0025	Not Inspected	-	-
P011	P011-0030	Not Inspected	-	-
P011	P011-0040	Not Inspected	-	-
P011	P011-0045	Not Inspected	-	-
P011	P011-0050	Not Inspected	-	-
P011	P011-0055	Not Inspected	-	-
P011	P011-0060	Not Inspected	-	-
P011	P011-0065	No Structural Defect	0000	CMOM
P011	P011-0070	3	3100	CMOM
P011	P011-0080	No Structural Defect	0000	CMOM
P011	P011-0090	No Structural Defect	0000	CMOM
P011	P011-0100	No Structural Defect	0000	CMOM
P011	P011-0110	1	1100	CMOM
P011	P011-0120	4	4131	REPLACE

MACP Scores and Manhole Recommendations

Sub-Basin Name	ID	MACP Structural Score	Str Quick Score	Recommended Rehab Actions
P011	P011-0130	Not Inspected	-	-
P011	P011-0135	Not Inspected	-	-
P011	P011-0140	3	3100	CMOM
P011	P011-0143	3	3121	CMOM
P011	P011-0145	Not Inspected	-	-
P011	P011-0146	5	5100	REPLACE
P011	P011-0150	1	1200	CMOM
P011	P011-0160	Not Inspected	-	-
P011	P011-0170	No Structural Defect	0000	CMOM
P011	P011-0180	Not Inspected	-	-
P011	P011-0190	No Structural Defect	0000	CMOM
P011	P011-0200	Not Inspected	-	-
P011	P011-0210	2	2111	CMOM
P011	P011-0220	No Structural Defect	0000	CMOM
P011	P011-0230	Not Inspected	-	-
P011	P011-0240	Not Inspected	-	-
P011	P011-0250	No Structural Defect	0000	CMOM
P011	P011-0270	3	3121	CMOM
P011	P011-0280	No Structural Defect	0000	CMOM
P011	P011-0282	Not Inspected	-	-
P011	P011-0290	No Structural Defect	0000	CMOM
P011	P011-0300	Not Inspected	-	-
P011	P011-0310	No Structural Defect	0000	CMOM
P011	P011-0320	Not Inspected	-	-
P011	P011-0330	5	5100	REPLACE
P011	P011-0342	3	3200	CMOM
P011	P011-0348	3	3111	CMOM
P011	P011-0350	No Structural Defect	0000	CMOM
P011	P011-0370	No Structural Defect	0000	CMOM
P011	P011-0390	No Structural Defect	0000	CMOM
P011	P011-0390A	Not Inspected	-	-
P011	P011-0391	1	1100	CMOM
P011	P011-0410	3	3200	CMOM
P011	P011-0430	No Structural Defect	0000	CMOM
P011	P011-0440	No Structural Defect	0000	CMOM
P011	P011-0450	3	3100	CMOM
P011	P011-0455	No Structural Defect	0000	CMOM
P011	P011-0460	Not Inspected	-	-
P011	P011-0470	No Structural Defect	0000	CMOM
P011	P011-0480	1	1100	CMOM
P011	P011-0485	Not Inspected	-	-
P011	P011-0490	1	1100	CMOM
P011	P011-0495	No Structural Defect	0000	CMOM
P011	P011-0500	No Structural Defect	0000	CMOM
P011	P011-0510	No Structural Defect	0000	CMOM
P011	P011-0512	Not Inspected	-	-
P011	P011-0515	No Structural Defect	0000	CMOM
P011	P011-0516	No Structural Defect	0000	CMOM

MACP Scores and Manhole Recommendations

Sub-Basin Name	ID	MACP Structural Score	Str Quick Score	Recommended Rehab Actions
P011	P011-0517	Not Inspected	-	-
P011	P011-0520	No Structural Defect	0000	CMOM
P011	P011-0525	No Structural Defect	0000	CMOM
P011	P011-0530	No Structural Defect	0000	CMOM
P011	P011-0540	Not Inspected	-	-
P011	P011-0550	No Structural Defect	0000	CMOM
P011	P011-0560	Not Inspected	-	-
P011	P011-0570	No Structural Defect	0000	CMOM
P011	P011-0580	3	3100	CMOM
P011	P011-0600	3	3211	CMOM
P011	P011-0620	No Structural Defect	0000	CMOM
P011	P011-0630	Not Inspected	-	-
P011	P011-0640	3	3100	CMOM
P011	P011-0650	Not Inspected	-	-
P011	P011-0660	Not Inspected	-	-
P011	P011-0670	Not Inspected	-	-
P011	P011-0680	5	5100	REPLACE
P011	P011-0690	Not Inspected	-	-
P011	P011-0700	Not Inspected	-	-
P011	P011-0710	No Structural Defect	0000	CMOM
P011	P011-0720	3	3111	CMOM
P011	P011-0730	3	3100	CMOM
P011	P011-0740	Not Inspected	-	-
P011	P011-0750	3	3100	CMOM
P011	P011-0760	Not Inspected	-	-
P011	P011-0770	No Structural Defect	0000	CMOM
P011	P011-0780	Not Inspected	-	-
P011	P011-0790	3	3100	CMOM
P011	P011-0800	Not Inspected	-	-
P011	P011-0820	Not Inspected	-	-
P011	P011-0830	Not Inspected	-	-
P011	P011-0840	Not Inspected	-	-
P011	P011-0850	Not Inspected	-	-
P011	P011-0860	Not Inspected	-	-
P011	P011-0870	Not Inspected	-	-
P011	P011-0880	Not Inspected	-	-
P011	P011-0890	Not Inspected	-	-
P011	P011-0895	Not Inspected	-	-
P011	P011-0900	No Structural Defect	0000	CMOM
P011	P011-0910	No Structural Defect	0000	CMOM
P011	P011-0915	Not Inspected	-	-
P011	P011-0920	Not Inspected	-	-
P011	P011-0925	Not Inspected	-	-
P011	P011-0930	3	3100	CMOM
P011	P011-0980	3	3400	CMOM
P011	P011-0980A	No Structural Defect	0000	CMOM
P011	P011-0990	3	3100	CMOM
P011	P011-1020	Not Inspected	-	-

MACP Scores and Manhole Recommendations

Sub-Basin Name	ID	MACP Structural Score	Str Quick Score	Recommended Rehab Actions
P011	P011-1060	No Structural Defect	0000	CMOM
P011	P011-1070	No Structural Defect	0000	CMOM
P011	P011-1080	Not Inspected	-	-
P011	P011-1090	Not Inspected	-	-
P011	P011-1140	Not Inspected	-	-
P011	P011-1150	Not Inspected	-	-
P011	P011-1160	Not Inspected	-	-
P011	P011-1170	Not Inspected	-	-
P011	P011-1180	No Structural Defect	0000	CMOM
P011	P011-1190	Not Inspected	-	-
P011	P011-1200	No Structural Defect	0000	CMOM
P011	P011-1210	Not Inspected	-	-
P011	P011-1220	3	3200	CMOM
P011	P011-1225	Not Inspected	-	-
P011	P011-1240	No Structural Defect	0000	CMOM
P011	P011-1250	Not Inspected	-	-
P011	P011-1260	No Structural Defect	0000	CMOM
P011	P011-1280	No Structural Defect	0000	CMOM
P011	P011-1300	1	1100	CMOM
P011	P011-1300A	No Structural Defect	0000	CMOM
P011	P011-1310	4	4100	REPLACE
P011	P011-1320	3	3300	CMOM
P011	P011-1330	Not Inspected	-	-
P011	P011-1340	No Structural Defect	0000	CMOM
P011	P011-1350	2	2200	CMOM
P011	P011-1360	Not Inspected	-	-
P011	P011-1370	Not Inspected	-	-
P011	P011-1390	No Structural Defect	0000	CMOM
P011	P011-1390A	No Structural Defect	0000	CMOM
P011	P011-1420	3	3100	CMOM
P011	P011-1430	Not Inspected	-	-
P011	P011-1440	Not Inspected	-	-
P011	P011-1450	No Structural Defect	0000	CMOM
P011	P011-1460	No Structural Defect	0000	CMOM
P011	P011-1465	Not Inspected	-	-
P011	P011-1470	No Structural Defect	0000	CMOM
P011	P011-1490	No Structural Defect	0000	CMOM
P011	P011-1500	Not Inspected	-	-
P011	P011-1510	1	1100	CMOM
P011	P011-1530	No Structural Defect	0000	CMOM
P011	P011-1550	No Structural Defect	0000	CMOM
P011	P011-1570	No Structural Defect	0000	CMOM
P011	P011-1580	No Structural Defect	0000	CMOM
P011	P011-1590	3	3111	CMOM
P011	P011-1600	Not Inspected	-	-
P011	P011-1690	No Structural Defect	0000	CMOM
P011	P011-1700	Not Inspected	-	-
P011	P011-1710	No Structural Defect	0000	CMOM

MACP Scores and Manhole Recommendations

Sub-Basin Name	ID	MACP Structural Score	Str Quick Score	Recommended Rehab Actions
P011	P011-1720	No Structural Defect	0000	CMOM
P011	P011-1730	No Structural Defect	0000	CMOM
P011	P011-1730A	No Structural Defect	0000	CMOM
P011	P011-1730B	No Structural Defect	0000	CMOM
P011	P011-1730C	3	3100	CMOM
P011	P011-1740	5	5100	RELIN
P011	P011-1750	Not Inspected	-	-
P011	P011-1760	No Structural Defect	0000	CMOM
P011	P011-1780	No Structural Defect	0000	CMOM
P011	P011-1800	No Structural Defect	0000	CMOM
P011	P011-1820	3	3100	CMOM
P011	P011-1840	No Structural Defect	0000	CMOM
P011	P011-1850	Not Inspected	-	-
P011	P011-1870	5	5100	REPLACE
P011	P011-1880	4	4131	REPLACE
P011	P011-1900	No Structural Defect	0000	CMOM
P011	P011-1920	3	3200	CMOM
P011	P011-1930	3	3100	CMOM
P011	P011-1940	No Structural Defect	0000	CMOM
P011	P011-1950	Not Inspected	-	-
P011	P011-1960	3	3100	CMOM
P011	P011-1970	Not Inspected	-	-
P011	P011-1973	Not Inspected	-	-
P011	P011-1976	No Structural Defect	0000	CMOM
P011	P011-1980	No Structural Defect	0000	CMOM
P011	P011-1980A	3	3200	CMOM
P011	P011-1980B	No Structural Defect	0000	CMOM
P011	P011-1990	No Structural Defect	0000	CMOM
P011	P011-2000	No Structural Defect	0000	CMOM
P011	P011-2010	No Structural Defect	0000	CMOM
P011	P011-2015	Not Inspected	-	-
P011	P011-2020	No Structural Defect	0000	CMOM
P011	P011-2040	No Structural Defect	0000	CMOM
P011	P011-2050	No Structural Defect	0000	CMOM
P011	P011-2070	No Structural Defect	0000	CMOM
P011	P011-2090	No Structural Defect	0000	CMOM
P011	P011-2110	3	3100	CMOM
P011	P011-2130	No Structural Defect	0000	CMOM
P011	P011-2130A	No Structural Defect	0000	CMOM
P011	P011-2150	5	5100	RELIN
P011	P011-2170	No Structural Defect	0000	CMOM
P011	P011-2190	Not Inspected	-	-
P011	P011-2200	Not Inspected	-	-
P011	P011-2210	Not Inspected	-	-
P011	P011-2220	No Structural Defect	0000	CMOM
P011	P011-2240	No Structural Defect	0000	CMOM
P011	P011-2260	No Structural Defect	0000	CMOM
P011	P011-2280	Not Inspected	-	-

MACP Scores and Manhole Recommendations

Sub-Basin Name	ID	MACP Structural Score	Str Quick Score	Recommended Rehab Actions
P011	P011-2290	Not Inspected	-	-
P011	P011-2300	No Structural Defect	0000	CMOM
P011	P011-2320	No Structural Defect	0000	CMOM
P011	P011-2340	No Structural Defect	0000	CMOM
P011	P011-2360	No Structural Defect	0000	CMOM
P011	P011-2380	Not Inspected	-	-
P011	P011-2400	No Structural Defect	0000	CMOM
P011	P011-2420	No Structural Defect	0000	CMOM
P011	P011-2440	No Structural Defect	0000	CMOM
P011	P011-2450	Not Inspected	-	-
P011	P011-2455	2	2100	CMOM
P011	P011-2460	Not Inspected	-	-
P011	P011-2470	No Structural Defect	0000	CMOM
P011	P011-2475	3	3100	CMOM
P011	P011-2480	No Structural Defect	0000	CMOM
P011	P011-2500	No Structural Defect	0000	CMOM
P011	P011-2510	4	4100	CMOM
P011	P011-2530	No Structural Defect	0000	CMOM
P011	P011-2540	No Structural Defect	0000	CMOM
P011	P011-2550	No Structural Defect	0000	CMOM
P011	P011-2560	5	5141	RELIN
P011	P011-2570	4	4100	REPLACE
P011	P011-2580	5	5100	REPAIR PIPE SEAL
P011	P011-2590	Not Inspected	-	-
P011	P011-2610	3	3100	CMOM
P011	P011-2630	No Structural Defect	0000	CMOM
P011	P011-2650	5	5100	REPLACE
P011	P011-2660	No Structural Defect	0000	CMOM
P011	P011-2670	No Structural Defect	0000	CMOM
P011	P011-2680	5	5141	RELIN
P011	P011-2690	No Structural Defect	0000	CMOM
P011	P011-2700	No Structural Defect	0000	CMOM
P011	P011-2710	Not Inspected	-	-
P011	P011-2720	Not Inspected	-	-
P011	P011-2730	No Structural Defect	0000	CMOM
P011	P011-2740	Not Inspected	-	-
P011	P011-2760	No Structural Defect	0000	CMOM
P011	P011-2780	5	5100	REPAIR PIPE SEAL
P012	P012-0010	No Structural Defect	0000	CMOM
P012	P012-0020	No Structural Defect	0000	CMOM
P012	P012-0030	No Structural Defect	0000	CMOM
P012	P012-0050	No Structural Defect	0000	CMOM
P012	P012-0070	Not Inspected	-	-
P012	P012-0090	No Structural Defect	0000	CMOM
P012	P012-0110	No Structural Defect	0000	CMOM
P012	P012-0130	Not Inspected	-	-
P012	P012-0150	No Structural Defect	0000	CMOM
P012	P012-0170	No Structural Defect	0000	CMOM

MACP Scores and Manhole Recommendations

Sub-Basin Name	ID	MACP Structural Score	Str Quick Score	Recommended Rehab Actions
P012	P012-0210	No Structural Defect	0000	CMOM
P012	P012-0220	No Structural Defect	0000	CMOM
P012	P012-0230	No Structural Defect	0000	CMOM
P012	P012-0232	3	3100	CMOM
P012	P012-0234	3	3100	CMOM
P012	P012-0236	No Structural Defect	0000	CMOM
P012	P012-0240	Not Inspected	-	-
P012	P012-0243	No Structural Defect	0000	CMOM
P012	P012-0250	No Structural Defect	0000	CMOM
P012	P012-0260	No Structural Defect	0000	CMOM
P012	P012-0270	No Structural Defect	0000	CMOM
P012	P012-0280	No Structural Defect	0000	CMOM
P012	P012-0290	No Structural Defect	0000	CMOM
P012	P012-0300	No Structural Defect	0000	CMOM
P012	P012-0310	No Structural Defect	0000	CMOM
P012	P012-0320	No Structural Defect	0000	CMOM
P012	P012-0330	No Structural Defect	0000	CMOM
P012	P012-0340	No Structural Defect	0000	CMOM
P012	P012-0350	No Structural Defect	0000	CMOM
P012	P012-0360	No Structural Defect	0000	CMOM
P012	P012-0370	No Structural Defect	0000	CMOM
P012	P012-0380	Not Inspected	-	-
P012	P012-0390	No Structural Defect	0000	CMOM
P012	P012-0400	No Structural Defect	0000	CMOM
P012	P012-0410	No Structural Defect	0000	CMOM
P012	P012-0420	No Structural Defect	0000	CMOM
P012	P012-0420A	3	3100	CMOM
P012	P012-0420B	No Structural Defect	0000	CMOM
P012	P012-0430	No Structural Defect	0000	CMOM
P012	P012-0440	No Structural Defect	0000	CMOM
P012	P012-0450	No Structural Defect	0000	CMOM
P012	P012-0460	No Structural Defect	0000	CMOM
P012	P012-0470	No Structural Defect	0000	CMOM
P012	P012-0480	No Structural Defect	0000	CMOM
P012	P012-0490	No Structural Defect	0000	CMOM
P012	P012-0500	Not Inspected	-	-
P012	P012-0510	No Structural Defect	0000	CMOM
P012	P012-0520	Not Inspected	-	-
P012	P012-0530	No Structural Defect	0000	CMOM
P012	P012-0540	No Structural Defect	0000	CMOM
RB01	RB01-0020	Not Inspected	-	-
RB01	RB01-0030	Not Inspected	-	-
RB01	RB01-0040	Not Inspected	-	-
RB01	RB01-0050	1	1400	CMOM
RB01	RB01-0060	1	1400	CMOM
RB01	RB01-0070	1	1400	CMOM
RB01	RB01-0080	Not Inspected	-	-
RB01	RB01-0090	Not Inspected	-	-

MACP Scores and Manhole Recommendations

Sub-Basin Name	ID	MACP Structural Score	Str Quick Score	Recommended Rehab Actions
RB01	RB01-0100	1	1400	CMOM
RB01	RB01-0110	Not Inspected		-
RB01	RB01-0120	Not Inspected		-
RB01	RB01-0130	5	5113	CMOM
RB01	RB01-0140	5	5113	CMOM
RB01	RB01-0150	5	5113	CMOM
RB01	RB01-0160	5	5113	FRAME AND COVER
RB01	RB01-0180	1	1400	CMOM
RB01	RB01-0190	Not Inspected	-	-
RB01	RB01-0200	1	1400	CMOM
RB01	RB01-0210	1	1400	CMOM
RB01	RB01-0220	1	1400	CMOM
RB01	RB01-0230	1	1400	CMOM
RB01	RB01-0240	1	1400	CMOM
RB01	RB01-0250	1	1400	CMOM
RB01	RB01-0260	1	1400	CMOM
RB01	RB01-0270	Not Inspected	-	-
RB01	RB01-0280	Not Inspected	-	-
RB01	RB01-0290	Not Inspected	-	-
RB01	RB01-0300	Not Inspected	-	-
RB01	RB01-0310	Not Inspected	-	-
RB01	RB01-0320	1	1400	CMOM
RB01	RB01-0330	1	1400	CMOM
RB01	RB01-0340	1	1400	CMOM
RB01	RB01-0350	1	1400	CMOM
RB01	RB01-0360	1	1400	CMOM
RB01	RB01-0370	1	1400	CMOM
RB01	RB01-0380	1	1400	CMOM
RB01	RB01-0390	1	1400	CMOM
RB01	RB01-0400	1	1400	CMOM
RB01	RB01-0410	1	1400	CMOM
RB01	RB01-0420	1	1400	CMOM
RB01	RB01-0430	1	1400	CMOM
RB01	RB01-0440	Not Inspected	-	-
RB01	RB01-0450	1	1400	CMOM
RB01	RB01-0460	Not Inspected	-	-
RB01	RB01-0470	Not Inspected	-	-
RB01	RB01-0480	Not Inspected	-	-
RB01	RB01-0490	Not Inspected	-	-
RB01	RB01-0500	Not Inspected	-	-
RB01	RB01-0505	1	1400	CMOM
RB01	RB01-0510	1	1400	CMOM
RB01	RB01-0520	1	1400	CMOM
RB01	RB01-0530	1	1400	CMOM
RB01	RB01-0540	1	1400	CMOM
RB01	RB01-0550	1	1400	CMOM
RB01	RB01-0560	1	1400	CMOM
RB01	RB01-0570	1	1400	CMOM

MACP Scores and Manhole Recommendations

Sub-Basin Name	ID	MACP Structural Score	Str Quick Score	Recommended Rehab Actions
RB01	RB01-0580	1	1400	CMOM
RB01	RB01-0590	1	1400	CMOM
RB01	RB01-0600	1	1400	CMOM
RB01	RB01-0610	1	1400	CMOM
RB01	RB01-0620	4	4114	CMOM
RB01	RB01-0630	1	1400	CMOM
RB01	RB01-0640	1	1400	CMOM
RB01	RB01-0650	1	1400	CMOM
RB01	RB01-0660	1	1400	CMOM
RB01	RB01-0670	1	1400	CMOM
RB01	RB01-0680	1	1400	CMOM
RB01	RB01-0690	1	1400	CMOM
RB01	RB01-0700	1	1400	CMOM
Z008	Z008-0150	3	3221	CMOM
Z008	Z008-0160	No Structural Defect	0000	CMOM
Z008	Z008-0165	No Structural Defect	0000	CMOM
Z008	Z008-0170	No Structural Defect	0000	CMOM
Z008	Z008-0180	No Structural Defect	0000	CMOM
Z008	Z008-0190	2	2100	CMOM
Z008	Z008-0200	No Structural Defect	0000	CMOM
Z008	Z008-0210	No Structural Defect	0000	CMOM
Z008	Z008-0220	Not Inspected	-	-
Z008	Z008-0230	Not Inspected	-	-
Z008	Z008-0240	1	1100	CMOM
Z008	Z008-0250	No Structural Defect	0000	CMOM
Z008	Z008-0260	No Structural Defect	0000	CMOM
Z008	Z008-0270	No Structural Defect	0000	CMOM
Z008	Z008-0277	No Structural Defect	0000	CMOM
Z008	Z008-0280	No Structural Defect	0000	CMOM
Z008	Z008-0290	3	3111	CMOM
Z008	Z008-0300	3	3211	CMOM
Z008	Z008-0310	3	3100	CMOM
Z008	Z008-0320	No Structural Defect	0000	CMOM
Z008	Z008-0330	4	4131	CMOM
Z008	Z008-0340	No Structural Defect	0000	CMOM
Z008	Z008-0345	No Structural Defect	0000	CMOM
Z008	Z008-0350	3	3211	CMOM
Z008	Z008-0360	3	3111	CMOM
Z008	Z008-0370	No Structural Defect	0000	CMOM
Z008	Z008-0380	No Structural Defect	0000	CMOM
Z008	Z008-0390	No Structural Defect	0000	CMOM
Z008	Z008-0400	3	3100	CMOM
Z008	Z008-0410	3	3100	CMOM
Z008	Z008-0420	Not Inspected	-	-
Z008	Z008-0430	3	3200	CMOM
Z008	Z008-0440	No Structural Defect	0000	CMOM
Z008	Z008-0450	3	3100	CMOM
Z008	Z008-0460	No Structural Defect	0000	CMOM

MACP Scores and Manhole Recommendations

Sub-Basin Name	ID	MACP Structural Score	Str Quick Score	Recommended Rehab Actions
Z008	Z008-0470	No Structural Defect	0000	CMOM
Z008	Z008-0480	3	3400	CMOM
Z008	Z008-0490	3	3400	CMOM
Z008	Z008-0500	3	3621	CMOM
Z008	Z008-0510	5	5134	RELINING
Z008	Z008-0520	5	5100	FRAME AND COVER
Z008	Z008-0530	Not Inspected	-	-
Z008	Z008-0540	3	3222	CMOM
Z008	Z008-0550	3	3200	CMOM
Z008	Z008-0560	3	3300	CMOM
Z008	Z008-0570	3	3621	CMOM
Z008	Z008-0580	No Structural Defect	0000	CMOM
Z008	Z008-0590	No Structural Defect	0000	CMOM
Z008	Z008-0600	3	3111	CMOM
Z008	Z008-0610	Not Inspected	-	-
Z008	Z008-0620	No Structural Defect	0000	CMOM
Z008	Z008-0630	4	4131	CMOM
Z008	Z008-0640	3	3213	CMOM
Z008	Z008-0650	Not Inspected	-	-
Z008	Z008-0660	3	3312	CMOM
Z008	Z008-0670	3	3212	CMOM
Z008	Z008-0680	5	5333	REPLACE
Z008	Z008-0690	No Structural Defect	0000	CMOM
Z008	Z008-0700	3	3100	CMOM
Z008	Z008-0710	No Structural Defect	0000	CMOM
Z008	Z008-0720	3	3415	CMOM
Z008	Z008-0730	Not Inspected	-	-
Z008	Z008-0740	3	3311	CMOM
Z008	Z008-0750	3	3113	CMOM
Z008	Z008-0760	Not Inspected	-	-
Z008	Z008-0770	3	3512	CMOM
Z008	Z008-0780	3	3100	CMOM
Z008	Z008-0790	Not Inspected	-	-
Z008	Z008-0795	No Structural Defect	0000	CMOM
Z008	Z008-0800	5	5132	FRAME AND COVER
Z008	Z008-0810	No Structural Defect	0000	CMOM
Z008	Z008-0820	3	3300	CMOM
Z008	Z008-0830	5	5132	REPAIR PIPE SEAL
Z008	Z008-0840	5	5131	REPAIR PIPE SEAL
Z008	Z008-0850	Not Inspected	-	-
Z008	Z008-0860	No Structural Defect	0000	CMOM
Z008	Z008-0870	No Structural Defect	0000	CMOM
Z008	Z008-0880	3	3121	CMOM
Z008	Z008-0890	No Structural Defect	0000	CMOM
Z008	Z008-0900	3	3111	CMOM
Z008	Z008-0910	3	3300	CMOM
Z008	Z008-0920	4	4232	RELINING
Z008	Z008-0930	No Structural Defect	0000	CMOM

MACP Scores and Manhole Recommendations

Sub-Basin Name	ID	MACP Structural Score	Str Quick Score	Recommended Rehab Actions
Z008	Z008-0940	4	4132	CMOM
Z008	Z008-0950	5	5133	RELIN
Z008	Z008-0960	3	3200	CMOM
Z008	Z008-0970	Not Inspected	-	-
Z008	Z008-0980	No Structural Defect	0000	CMOM
Z008	Z008-0990	3	3100	CMOM
Z008	Z008-1000	4	4132	CMOM
Z008	Z008-1040	Not Inspected	-	-
Z008	Z008-1050	1	1200	CMOM
Z008	Z008-1060	No Structural Defect	0000	CMOM
Z008	Z008-1070	No Structural Defect	0000	CMOM
Z008	Z008-1080	3	3211	CMOM
Z008	Z008-1090	3	3100	CMOM
Z008	Z008-1100	4	4131	RELIN
Z008	Z008-1110	No Structural Defect	0000	CMOM
Z008	Z008-1120	Not Inspected	-	-
Z008	Z008-1130	No Structural Defect	0000	CMOM
Z008	Z008-1140	No Structural Defect	0000	CMOM
Z008	Z008-1150	No Structural Defect	0000	CMOM
Z008	Z008-1160	No Structural Defect	0000	CMOM
Z008	Z008-1170	No Structural Defect	0000	CMOM
Z008	Z008-1180	Not Inspected	-	-
Z008	Z008-1190	3	3411	CMOM
Z008	Z008-1200	No Structural Defect	0000	CMOM
Z008	Z008-1210	No Structural Defect	0000	CMOM
Z008	Z008-1220	No Structural Defect	0000	CMOM
Z008	Z008-1230	5	5100	REPAIR PIPE SEAL
Z008	Z008-1240	5	5100	REPAIR PIPE SEAL
Z008	Z008-1250	No Structural Defect	0000	CMOM
Z008	Z008-1260	1	1400	CMOM
Z008	Z008-1270	5	5133	RELIN
Z008	Z008-1280	3	3200	CMOM
Z008	Z008-1290	No Structural Defect	0000	CMOM
Z008	Z008-1300	No Structural Defect	0000	CMOM
Z008	Z008-1310	3	3100	CMOM
Z008	Z008-1320	2	2111	CMOM
Z008	Z008-1330	5	5100	RELIN
Z008	Z008-1340	Not Inspected	-	-
Z008	Z008-1350	No Structural Defect	0000	CMOM
Z008	Z008-1360	No Structural Defect	0000	CMOM
Z008	Z008-1370	3	3100	CMOM
Z008	Z008-1380	No Structural Defect	0000	CMOM
Z008	Z008-1390	Not Inspected	-	-
Z008	Z008-1400	No Structural Defect	0000	CMOM
Z008	Z008-1400A	No Structural Defect	0000	CMOM
Z008	Z008-1410	5	5131	CMOM
Z008	Z008-1420	1	1300	CMOM
Z008	Z008-1430	1	1200	CMOM

MACP Scores and Manhole Recommendations

Sub-Basin Name	ID	MACP Structural Score	Str Quick Score	Recommended Rehab Actions
Z008	Z008-1440	No Structural Defect	0000	CMOM
Z008	Z008-1450	No Structural Defect	0000	CMOM
Z008	Z008-1460	No Structural Defect	0000	CMOM
Z008	Z008-1470	No Structural Defect	0000	CMOM
Z008	Z008-1480	2	2200	CMOM
Z008	Z008-1490	No Structural Defect	0000	CMOM
Z008	Z008-1500	No Structural Defect	0000	CMOM
Z008	Z008-1970	Not Inspected	-	-
Z008	Z008-1980	3	3500	CMOM
Z008	Z008-1990	No Structural Defect	0000	CMOM
Z008	Z008-2000	No Structural Defect	0000	CMOM
Z008	Z008-2010	5	5100	FRAME AND COVER
Z008	Z008-2020	No Structural Defect	0000	CMOM
Z008	Z008-2030	Not Inspected	-	-
Z008	Z008-2040	1	1100	CMOM
Z008	Z008-2050	Not Inspected	-	-
Z008	Z008-2060	5	5133	RELIN
Z008	Z008-2070	3	3200	CMOM
Z008	Z008-2080	3	3400	CMOM
Z008	Z008-2090	4	4133	CMOM
Z008	Z008-2100	Not Inspected	-	-
Z008	Z008-2110	4	4133	RELIN
Z008	Z008-2120	No Structural Defect	0000	CMOM
Z008	Z008-2130	Not Inspected	-	-
Z008	Z008-2140	5	5134	REPAIR PIPE SEAL
Z008	Z008-2150	3	3100	CMOM
Z008	Z008-2160	No Structural Defect	0000	CMOM
Z008	Z008-2170	3	3100	CMOM
Z008	Z008-2180	No Structural Defect	0000	CMOM
Z008	Z008-2190	No Structural Defect	0000	CMOM
Z008	Z008-2200	No Structural Defect	0000	CMOM
Z008	Z008-2210	No Structural Defect	0000	CMOM
Z008	Z008-2220	No Structural Defect	0000	CMOM
Z008	Z008-2230	No Structural Defect	0000	CMOM
Z008	Z008-2240	5	5131	CMOM
Z008	Z008-2250	3	3100	CMOM
Z008	Z008-2260	No Structural Defect	0000	CMOM
Z008	Z008-2270	3	3100	CMOM
Z008	Z008-2280	4	4131	RELIN
Z008	Z008-2290	Not Inspected	-	-
Z008	Z008-2300	3	3213	CMOM
Z008	Z008-2310	3	3300	CMOM
Z008	Z008-2320	No Structural Defect	0000	CMOM
Z008	Z008-2330	3	3111	CMOM
Z008	Z008-2340	Not Inspected	-	-
Z008	Z008-2350	No Structural Defect	0000	CMOM
Z008	Z008-2360	Not Inspected	-	-
Z008	Z008-2370	No Structural Defect	0000	CMOM

MACP Scores and Manhole Recommendations

Sub-Basin Name	ID	MACP Structural Score	Str Quick Score	Recommended Rehab Actions
Z008	Z008-2380	Not Inspected	-	-
Z008	Z008-2390	No Structural Defect	0000	CMOM
Z008	Z008-2400	No Structural Defect	0000	CMOM
Z008	Z008-2410	No Structural Defect	0000	CMOM
Z008	Z008-2420	Not Inspected	-	-
Z008	Z008-2430	Not Inspected	-	-
Z008	Z008-2440	No Structural Defect	0000	CMOM
Z008	Z008-2450	No Structural Defect	0000	CMOM
Z008	Z008-2460	No Structural Defect	0000	CMOM
Z008	Z008-2470	No Structural Defect	0000	CMOM
Z008	Z008-2480	No Structural Defect	0000	CMOM
Z008	Z008-2490	No Structural Defect	0000	CMOM
Z008	Z008-2500	No Structural Defect	0000	CMOM
Z008	Z008-2510	No Structural Defect	0000	CMOM
Z008	Z008-2520	No Structural Defect	0000	CMOM
Z008	Z008-2530	No Structural Defect	0000	CMOM
Z008	Z008-2540	No Structural Defect	0000	CMOM
Z008	Z008-2550	No Structural Defect	0000	CMOM
Z008	Z008-2560	3	3100	CMOM
Z008	Z008-2570	3	3100	CMOM
Z008	Z008-2580	Not Inspected	-	-
Z008	Z008-2590	3	3100	CMOM
Z008	Z008-2600	No Structural Defect	0000	CMOM
Z008	Z008-2610	No Structural Defect	0000	CMOM
Z008	Z008-2620	3	3100	CMOM
Z008	Z008-2630	No Structural Defect	0000	CMOM
Z008	Z008-2640	No Structural Defect	0000	CMOM
Z008	Z008-2650	Not Inspected	-	-
Z008	Z008-2660	No Structural Defect	0000	CMOM
Z008	Z008-2670	3	3100	CMOM
Z008	Z008-2680	No Structural Defect	0000	CMOM
Z008	Z008-2690	No Structural Defect	0000	CMOM
Z008	Z008-2700	No Structural Defect	0000	CMOM
Z008	Z008-2710	No Structural Defect	0000	CMOM
Z008	Z008-2720	No Structural Defect	0000	CMOM
Z008	Z008-2730	No Structural Defect	0000	CMOM
Z008	Z008-2740	No Structural Defect	0000	CMOM
Z008	Z008-2750	3	3100	CMOM
Z008	Z008-2760	3	3100	CMOM
Z008	Z008-2770	No Structural Defect	0000	CMOM
Z008	Z008-2780	No Structural Defect	0000	CMOM
Z008	Z008-2790	No Structural Defect	0000	CMOM
Z008	Z008-2800	No Structural Defect	0000	CMOM
Z008	Z008-2810	No Structural Defect	0000	CMOM
Z008	Z008-2820	Not Inspected	-	-
Z008	Z008-2830	No Structural Defect	0000	CMOM
Z008	Z008-2840	Not Inspected	-	-
Z008	Z008-2850	Not Inspected	-	-

MACP Scores and Manhole Recommendations

Sub-Basin Name	ID	MACP Structural Score	Str Quick Score	Recommended Rehab Actions
Z008	Z008-2870	Not Inspected	-	-
Z008	Z008-2880	Not Inspected	-	-
Z008	Z008-2890	No Structural Defect	0000	CMOM
Z008	Z008-2900	No Structural Defect	0000	CMOM
Z008	Z008-2910	Not Inspected	-	-
Z008	Z008-3160	No Structural Defect	0000	CMOM
Z008	Z008-3170	No Structural Defect	0000	CMOM
Z008	Z008-3180	No Structural Defect	0000	CMOM
Z008	Z008-3190	No Structural Defect	0000	CMOM
Z008	Z008-4000	3	3100	CMOM
Z008	Z008-4010	3	3100	CMOM
Z008	Z008-4020	Not Inspected	-	-
Z008	Z008-4030	No Structural Defect	0000	CMOM
Z008	Z008-4040	Not Inspected	-	-
Z008	Z008-4050	1	1200	CMOM
Z008	Z008-4060	3	3111	CMOM
Z008	Z008-4070	3	3100	CMOM
Z008	Z008-4080	3	3100	CMOM
Z008	Z008-4090	No Structural Defect	0000	CMOM
Z008	Z008-4100	1	1100	CMOM
Z008	Z008-4110	No Structural Defect	0000	CMOM
Z008	Z008-4120	Not Inspected	-	-
Z008	Z008-4130	4	4100	FRAME AND COVER
Z008	Z008-4140	5	5131	RELIN
Z008	Z008-4150	3	3100	CMOM
Z008	Z008-4160	3	3111	CMOM
Z008	Z008-4170	Not Inspected	-	-
Z008	Z008-4180	1	1300	CMOM
Z008	Z008-4190	3	3100	CMOM
Z008	Z008-4200	Not Inspected	-	-
Z008	Z008-4210	No Structural Defect	0000	CMOM
Z008	Z008-4220	No Structural Defect	0000	CMOM
Z008	Z008-4230	No Structural Defect	0000	CMOM
Z008	Z008-4240	No Structural Defect	0000	CMOM
Z008	Z008-4250	5	5100	FRAME AND COVER
Z008	Z008-4260	No Structural Defect	0000	CMOM
Z008	Z008-4270	No Structural Defect	0000	CMOM
Z008	Z008-4280	No Structural Defect	0000	CMOM
Z008	Z008-4290	No Structural Defect	0000	CMOM
Z008	Z008-4300	No Structural Defect	0000	CMOM
Z008	Z008-4310	No Structural Defect	0000	CMOM
Z008	Z008-4320	No Structural Defect	0000	CMOM
Z008	Z008-4330	No Structural Defect	0000	CMOM
Z008	Z008-4340	No Structural Defect	0000	CMOM
Z008	Z008-4350	No Structural Defect	0000	CMOM
Z008	Z008-4360	No Structural Defect	0000	CMOM
Z008	Z008-4370	Not Inspected	-	-
Z008	Z008-4380	No Structural Defect	0000	CMOM

MACP Scores and Manhole Recommendations

Sub-Basin Name	ID	MACP Structural Score	Str Quick Score	Recommended Rehab Actions
Z008	Z008-4390	No Structural Defect	0000	CMOM
Z008	Z008-4400	No Structural Defect	0000	CMOM
Z008	Z008-4410	Not Inspected	-	-
Z008	Z008-4420	No Structural Defect	0000	CMOM
Z008	Z008-4430	No Structural Defect	0000	CMOM
Z008	Z008-4440	No Structural Defect	0000	CMOM
Z008	Z008-4450	Not Inspected	-	-
Z008	Z008-4460	3	3300	CMOM
Z008	Z008-4470	Not Inspected	-	-
Z008	Z008-4480	3	3113	CMOM
Z008	Z008-4490	3	3112	CMOM
Z008	Z008-4500	5	5100	RELINE
Z008	Z008-4510	3	3200	CMOM
Z008	Z008-4520	No Structural Defect	0000	CMOM
Z008	Z008-4530	3	3100	CMOM
Z008	Z008-4540	4	4100	CMOM
Z008	Z008-4550	No Structural Defect	0000	CMOM
Z008	Z008-4560	5	5133	RELINE
Z008	Z008-4570	3	3100	CMOM
Z008	Z008-4580	Not Inspected	-	-
Z008	Z008-4590	3	3100	CMOM
Z008	Z008-4600	No Structural Defect	0000	CMOM
Z008	Z008-4610	3	3221	CMOM
Z008	Z008-4620	No Structural Defect	0000	CMOM
Z008	Z008-4630	No Structural Defect	0000	CMOM
Z008	Z008-4640	5	5133	RELINE
Z008	Z008-4650	4	4131	CMOM
Z008	Z008-4660	Not Inspected	-	-
Z008	Z008-4670	1	1100	CMOM
Z008	Z008-4680	5	5112	REPAIR PIPE SEAL
Z008	Z008-4690	4	4100	CMOM
Z008	Z008-4700	4	4200	RELINE
Z008	Z008-4710	3	3100	CMOM
Z008	Z008-4720	No Structural Defect	0000	CMOM
Z008	Z008-4730	5	5200	REPLACE
Z008	Z008-4740	Not Inspected	-	-
Z008	Z008-4750	1	1200	CMOM
Z008	Z008-4760	5	5131	RELINE
Z008	Z008-4770	3	3112	CMOM
Z008	Z008-4780	3	3315	CMOM
Z008	Z008-4790	3	3111	CMOM
Z008	Z008-4800	No Structural Defect	0000	CMOM
Z008	Z008-4810	3	3113	CMOM
Z008	Z008-4820	3	3312	CMOM
Z008	Z008-4830	1	1200	CMOM
Z008	Z008-4840	3	3311	CMOM
Z008	Z008-4850	3	3113	CMOM
Z008	Z008-4860	5	5132	RELINE

MACP Scores and Manhole Recommendations

Sub-Basin Name	ID	MACP Structural Score	Str Quick Score	Recommended Rehab Actions
Z008	Z008-4870	1	1100	CMOM
Z008	Z008-4880	3	3113	CMOM
Z008	Z008-4890	3	3100	CMOM
Z008	Z008-4900	Not Inspected	-	-
Z008	Z008-4910	3	3200	CMOM
Z008	Z008-4920	Not Inspected	-	-
Z008	Z008-4930	3	3100	CMOM
Z008	Z008-4940	No Structural Defect	0000	CMOM
Z008	Z008-4950	No Structural Defect	0000	CMOM
Z008	Z008-4960	No Structural Defect	0000	CMOM
Z008	Z008-4970	No Structural Defect	0000	CMOM
Z008	Z008-4980	No Structural Defect	0000	CMOM
Z008	Z008-4990	No Structural Defect	0000	CMOM
Z008	Z008-5000	No Structural Defect	0000	CMOM
Z008	Z008-5010	No Structural Defect	0000	CMOM
Z008	Z008-5020	No Structural Defect	0000	CMOM
Z008	Z008-5030	No Structural Defect	0000	CMOM
Z008	Z008-5040	No Structural Defect	0000	CMOM
Z008	Z008-5050	No Structural Defect	0000	CMOM
Z008	Z008-5060	No Structural Defect	0000	CMOM
Z008	Z008-5070	No Structural Defect	0000	CMOM
Z008	Z008-5080	No Structural Defect	0000	CMOM
Z008	Z008-5090	No Structural Defect	0000	CMOM
Z008	Z008-5100	No Structural Defect	0000	CMOM
Z008	Z008-5110	No Structural Defect	0000	CMOM
Z008	Z008-5120	No Structural Defect	0000	CMOM
Z008	Z008-5130	No Structural Defect	0000	CMOM

APPENDIX B

Manhole Rehabilitation Summary

Manhole Rehabilitation Summary				
Basin	ID	Recommended Rehabilitation Actions		
		Reline	Repair Pipe Seal(s)	Frame and Cover
CC01	CC01-0130	X	-	-
CC01	CC01-0190	X	-	-
M002	M002-0080	X	-	-
M002	M002-0270	X	-	X
M002	M002-0500	X	X	X
M002	M002-0740	-	X	-
M002	M002-1280	-	-	X
M002	M002-1460	X	-	X
M002	M002-2580	X	X	-
M002	M002-0930	X	-	-
M002	M002-1170	X	X	-
M002	M002-1370	X	-	X
M002	M002-1390	X	-	X
P011	P011-1740	X	X	X
P011	P011-2150	X	-	-
P011	P011-2560	X	X	X
P011	P011-2580	-	-	X
P011	P011-2680	X	X	-
P011	P011-2780	-	X	-
RB01	RB01-0160	-	-	X
Z008	Z008-0510	-	X	X
Z008	Z008-0520	-	-	X
Z008	Z008-0800	-	-	X
Z008	Z008-0830	-	X	-
Z008	Z008-0840	-	X	-
Z008	Z008-0950	X	X	-
Z008	Z008-1230	-	X	-
Z008	Z008-1240	-	X	-
Z008	Z008-1270	X	X	-
Z008	Z008-1330	X	X	X
Z008	Z008-2010	-	-	X
Z008	Z008-2060	X	X	-
Z008	Z008-2140	-	X	-
Z008	Z008-4140	X	-	-
Z008	Z008-4250	-	-	X
Z008	Z008-4500	X	-	X
Z008	Z008-4560	X	X	X
Z008	Z008-4640	X	X	-
Z008	Z008-4680	-	X	-
Z008	Z008-4760	X	X	-
Z008	Z008-4860	X	X	-
Z008	Z008-0920	X	-	-
Z008	Z008-1100	X	X	-
Z008	Z008-2110	X	X	X
Z008	Z008-2280	-	X	X
Z008	Z008-4130	-	-	X
Z008	Z008-4700	X	X	-

APPENDIX C

PACP Scores and Sewer Line Recommendations

PACP Scores and Sewer Line Recommendations							
Sub-Basin Name	Segment ID	Diameter	Length (lf)	PACP Structural Score	Str Quick Score	Recommended Rehab Action	Inspection Type
M002	M002-0010_M001-0450	36	498	0	0000	CMOM	CCTV
M002	M002-0020_M002-0010	36	407	0	0000	CMOM	CCTV
M002	M002-0030_M002-0020	8	138	4	4231	Point Repair	CCTV
M002	M002-0040_M002-0030	8	145	4	4100	Point Repair	CCTV
M002	M002-0050_M002-0030	8	394	4	4221	CMOM	CCTV
M002	M002-0060_M002-0050	8	402	3	3100	CMOM	CCTV
M002	M002-0070_M002-0020	36	133	0	0000	CMOM	CCTV
M002	M002-0080_M002-0070	6	230	3	3100	CMOM	CCTV
M002	M002-0085_M002-0080	6	250	3	3100	CMOM	CCTV
M002	M002-0090_M002-0085	6	232	0	0000	CMOM	CCTV
M002	M002-0091_M002-0090	6	26	-	-	-	Clean Only
M002	M002-0092_M002-0091	6	329	-	-	-	Clean Only
M002	M002-0093_M002-0092	6	325	-	-	-	Clean Only
M002	M002-0094_M002-0093	6	55	-	-	-	Clean Only
M002	M002-0095_M002-0094	6	183	-	-	-	Clean Only
M002	M002-0100_M002-0070	36	310	0	0000	CMOM	CCTV
M002	M002-0110_M002-0100	8	74	2	2100	CMOM	CCTV
M002	M002-0120_M002-0110	8	199	2	2100	CMOM	CCTV
M002	M002-0130_M002-0120	8	259	1	1100	CMOM	CCTV
M002	M002-0140_M002-0100	36	479	0	0000	CMOM	CCTV
M002	M002-0150_M002-0140	36	383	0	0000	CMOM	CCTV
M002	M002-0160_M002-0150	36	354	0	0000	CMOM	CCTV
M002	M002-0170_M002-0160	36	285	0	0000	CMOM	CCTV
M002	M002-0180_M002-0170	36	210	0	0000	CMOM	CCTV
M002	M002-0190_M002-0180	36	405	0	0000	CMOM	CCTV
M002	M002-0200_M002-0190	36	349	0	0000	CMOM	CCTV
M002	M002-0210_M002-0200	36	356	0	0000	CMOM	CCTV
M002	M002-0220_M002-0210	36	260	0	0000	CMOM	CCTV
M002	M002-0230_M002-0220	36	103	3	3B00	CMOM	CCTV
M002	M002-0240_M002-0230	8	415	5	5942	Pipe Burst	CCTV
M002	M002-0250_M002-0240	8	400	5	5231	Point Repair	CCTV
M002	M002-0260_M002-0250	8	300	5	5132	Pipe Burst	CCTV
M002	M002-0270_M002-0260	6	263	3	3324	CMOM	CCTV
M002	M002-0280_M002-0270	6	172	5	5241	Open Cut	CCTV
M002	M002-0290_M002-0280	6	152	3	3123	CMOM	CCTV
M002	M002-0300_M002-0290	6	390	5	5242	Open Cut	CCTV
M002	M002-0310_M002-0230	36	161	3	3E+00	CMOM	CCTV
M002	M002-0320_M002-0310	8	76	1	1100	CMOM	CCTV
M002	M002-0330_M002-0320	8	90	0	0000	CMOM	CCTV
M002	M002-0340_M002-0320	8	390	5	5336	Open Cut	CCTV
M002	M002-0350_M002-0340	8	301	2	2A00	CMOM	CCTV
M002	M002-0360_M002-0350	8	299	2	2400	CMOM	CCTV
M002	M002-0370_M002-0360	8	267	3	312B	CMOM	CCTV
M002	M002-0380_M002-0370	8	60	-	-	-	Clean Only

PACP Scores and Sewer Line Recommendations							
Sub-Basin Name	Segment ID	Diameter	Length (lf)	PACP Structural Score	Str Quick Score	Recommended Rehab Action	Inspection Type
M002	M002-0390_M002-0370	8	170	-	-	-	Clean Only
M002	M002-0400_M002-0310	36	293	3	3J00	CMOM	CCTV
M002	M002-0410_M002-0400	8	97	5	5144	Open Cut	CCTV
M002	M002-0420_M002-0410	8	120	0	0000	CMOM	CCTV
M002	M002-0430_M002-0410	8	197	3	3111	CMOM	CCTV
M002	M002-0440_M002-0430	8	132	0	0000	CMOM	CCTV
M002	M002-0450_M002-0440	8	394	0	0000	CMOM	CCTV
M002	M002-0455_M002-0450	8	171	1	1100	CMOM	CCTV
M002	M002-0460_M002-0455	8	93	0	0000	CMOM	CCTV
M002	M002-0470_M002-0460	8	211	0	0000	CMOM	CCTV
M002	M002-0480_M002-0400	36	325	3	3K00	CMOM	CCTV
M002	M002-0490_M002-0480	36	484	3	3R00	CMOM	CCTV
M002	M002-0500_M002-0490	36	266	3	3I00	CMOM	CCTV
M002	M002-0510_M002-0500	36	374	3	3M00	CMOM	CCTV
M002	M002-0520_M002-0510	36	628	0	0000	CMOM	CCTV
M002	M002-0530_M002-0520	36	120	0	0000	CMOM	CCTV
M002	M002-0532_M002-0530	36	29	0	0000	CMOM	CCTV
M002	M002-0540_M002-0540A	36	495	0	0000	CMOM	CCTV
M002	M002-0540A_M002-0532	36	92	0	0000	CMOM	CCTV
M002	M002-0550_M002-0540	36	120	0	0000	CMOM	CCTV
M002	M002-0560_M002-0550	36	387	0	0000	CMOM	CCTV
M002	M002-0570_M002-0560	36	384	1	1100	CMOM	CCTV
M002	M002-0580_M002-0570	36	709	0	0000	CMOM	CCTV
M002	M002-0590_M002-0580	36	494	0	0000	CMOM	CCTV
M002	M002-0600_M002-0590	36	1,088	3	3X00	CMOM	CCTV
M002	M002-0610_M002-0600	36	617	0	0000	CMOM	CCTV
M002	M002-0620_M002-0610	36	597	0	0000	CMOM	CCTV
M002	M002-0630_M002-0620	36	1,105	3	3Q00	CMOM	CCTV
M002	M002-0640_M002-0630	36	465	0	0000	CMOM	CCTV
M002	M002-0650_M002-0640	36	469	0	0000	CMOM	CCTV
M002	M002-0660_M002-0650	36	465	0	0000	CMOM	CCTV
M002	M002-0670_M002-0660	36	435	0	0000	CMOM	CCTV
M002	M002-0680_M002-0670	36	445	0	0000	CMOM	CCTV
M002	M002-0690_M002-0680	36	119	-	-	-	Inaccessible
M002	M002-0710_M002-0690	12	371	3	3N21	CMOM	CCTV
M002	M002-0720_M002-0710	10	305	4	413L	CMOM	CCTV
M002	M002-0740_M002-0720	8	341	3	3E+11	CMOM	CCTV
M002	M002-0750_M002-0740	8	361	5	5236	Open Cut	CCTV
M002	M002-0760_M002-0750	8	349	0	0000	CMOM	CCTV
M002	M002-0770_M002-0690	36	656	0	0000	CMOM	CCTV
M002	M002-0780_M002-0770	36	788	0	0000	CMOM	CCTV
M002	M002-0790_M002-0790A	36	142	0	0000	CMOM	CCTV
M002	M002-0790A_M002-0780	36	669	0	0000	CMOM	CCTV
M002	M002-0800_M002-0790	36	419	0	0000	CMOM	CCTV

PACP Scores and Sewer Line Recommendations							
Sub-Basin Name	Segment ID	Diameter	Length (lf)	PACP Structural Score	Str Quick Score	Recommended Rehab Action	Inspection Type
M002	M002-0810_M002-0800	8	298	1	1100	CMOM	CCTV
M002	M002-0820_M002-0810	8	349	0	0000	CMOM	CCTV
M002	M002-0830_M002-0820	8	298	0	0000	CMOM	CCTV
M002	M002-0840_M002-0830	8	300	0	0000	CMOM	CCTV
M002	M002-0850_M002-0840	6	116	0	0000	CMOM	CCTV
M002	M002-0860_M002-0850	6	397	3	3100	CMOM	CCTV
M002	M002-0870_M002-0840	8	398	0	0000	CMOM	CCTV
M002	M002-0880_M002-0870	8	353	0	0000	CMOM	CCTV
M002	M002-0900_M002-0880	6	103	0	0000	CMOM	CCTV
M002	M002-0910_M002-0900	6	246	3	3227	CMOM	CCTV
M002	M002-0920_M002-0910	6	151	0	0000	CMOM	CCTV
M002	M002-0930_M002-0920	6	401	1	1300	CMOM	CCTV
M002	M002-0935_M002-0930	6	197	5	5121	Point Repair	CCTV
M002	M002-0940_M002-0800	18	609	3	3100	CMOM	CCTV
M002	M002-0950_M002-0940	18	300	3	3100	CMOM	CCTV
M002	M002-0960_M002-0950	18	354	0	0000	CMOM	CCTV
M002	M002-0970_M002-0960	18	576	0	0000	CMOM	CCTV
M002	M002-0980_M002-0970	8	372	0	0000	CMOM	CCTV
M002	M002-0990_M002-0980	8	101	0	0000	CMOM	CCTV
M002	M002-1000_M002-1000A	8	482	0	0000	CMOM	CCTV
M002	M002-1000A_M002-0990	8	173	0	0000	CMOM	CCTV
M002	M002-1005_M002-1005A	8	126	0	0000	CMOM	CCTV
M002	M002-1005A_M002-1000	8	435	0	0000	CMOM	CCTV
M002	M002-1010_M002-1005	8	219	5	5141	Point Repair	CCTV
M002	M002-1020_M002-1010	8	407	3	3000	CMOM	CCTV
M002	M002-1030_M002-1020	8	188	0	0000	CMOM	CCTV
M002	M002-1040_M002-1030	15	203	-	-	-	Clean Only
M002	M002-1050_M002-1040	15	169	-	-	-	Clean Only
M002	M002-1060_M002-1030	8	137	-	-	-	Clean Only
M002	M002-1070_M002-1060	8	35	-	-	-	Clean Only
M002	M002-1080_M002-1070	8	301	1	1100	CMOM	CCTV
M002	M002-1090_M002-1080	8	283	0	0000	CMOM	CCTV
M002	M002-1098_M002-1060	8	198	-	-	-	Clean Only
M002	M002-1100_M002-1098	8	20	-	-	-	Clean Only
M002	M002-1110_M002-1100	8	85	2	2100	CMOM	CCTV
M002	M002-1120_M002-1110	8	334	0	0000	CMOM	CCTV
M002	M002-1130_M002-1120	8	416	2	2100	CMOM	CCTV
M002	M002-1140_M002-1140A	8	81	0	0000	CMOM	CCTV
M002	M002-1140A_M002-1130	8	221	0	0000	CMOM	CCTV
M002	M002-1150_M002-1140	8	234	0	0000	CMOM	CCTV
M002	M002-1160_M002-1150	6	145	-	-	-	Clean Only
M002	M002-1170_M002-1160	6	289	-	-	-	Clean Only
M002	M002-1180_M002-0780	21	141	0	0000	CMOM	CCTV
M002	M002-1190_M002-1180	18	506	0	0000	CMOM	CCTV

PACP Scores and Sewer Line Recommendations

Sub-Basin Name	Segment ID	Diameter	Length (lf)	PACP Structural Score	Str Quick Score	Recommended Rehab Action	Inspection Type
M002	M002-1200_M002-1190	21	304	0	0000	CMOM	CCTV
M002	M002-1210_M002-1200	21	248	0	0000	CMOM	CCTV
M002	M002-1220_M002-1210	21	248	0	0000	CMOM	CCTV
M002	M002-1230_M002-1220	18	220	0	0000	CMOM	CCTV
M002	M002-1240_M002-1230	18	499	0	0000	CMOM	CCTV
M002	M002-1250_M002-1240	21	500	0	0000	CMOM	CCTV
M002	M002-1260_M002-1250	21	499	0	0000	CMOM	CCTV
M002	M002-1270_M002-1260	21	502	0	0000	CMOM	CCTV
M002	M002-1280_M002-1270	18	500	0	0000	CMOM	CCTV
M002	M002-1290_M002-1280	18	513	0	0000	CMOM	CCTV
M002	M002-1295_M002-1290	18	382	0	0000	CMOM	CCTV
M002	M002-1300_M002-1295	18	155	0	0000	CMOM	CCTV
M002	M002-1310_M002-1300	18	461	3	3800	CMOM	CCTV
M002	M002-1320_M002-1310	18	497	5	5137	Point Repair	CCTV
M002	M002-1330_M002-1320	18	501	0	0000	CMOM	CCTV
M002	M002-1340_M002-1330	18	368	0	0000	CMOM	CCTV
M002	M002-1350_M002-1340	21	389	0	0000	CMOM	CCTV
M002	M002-1360_M002-1350	21	335	0	0000	CMOM	CCTV
M002	M002-1370_M002-1360	18	296	0	0000	CMOM	CCTV
M002	M002-1380_M002-1370	18	394	3	3300	CMOM	CCTV
M002	M002-1385_M002-1380	18	170	0	0000	CMOM	CCTV
M002	M002-1390_M002-1385	18	190	0	0000	CMOM	CCTV
M002	M002-1400_M002-1390	18	361	3	3800	CMOM	CCTV
M002	M002-1460_M002-0810	8	164	-	-	-	Clean Only
M002	M002-1470_M002-1460	8	214	-	-	-	Clean Only
M002	M002-1480_M002-1470	8	163	-	-	-	Clean Only
M002	M002-1490_M002-1460	8	268	-	-	-	Clean Only
M002	M002-1495_M002-1490	8	178	-	-	-	Clean Only
M002	M002-1510_M002-0760	8	406	3	3112	CMOM	CCTV
M002	M002-1520_M002-1520A	8	137	0	0000	CMOM	CCTV
M002	M002-1520A_M002-1510	8	39	0	0000	CMOM	CCTV
M002	M002-1525_M002-1490	8	275	-	-	-	Clean Only
M002	M002-1530_M002-1525	8	244	-	-	-	Clean Only
M002	M002-1535_M002-1525	8	304	-	-	-	Clean Only
M002	M002-1540_M002-1530	8	393	-	-	-	Clean Only
M002	M002-1550_M002-1540	8	33	-	-	-	Clean Only
M002	M002-1560_M002-1550	8	196	-	-	-	Clean Only
M002	M002-1570_M002-1560	8	402	-	-	-	Clean Only
M002	M002-1580_M002-1550	8	332	-	-	-	Clean Only
M002	M002-1590_M002-1580	8	306	-	-	-	Clean Only
M002	M002-1600_M002-1580	8	149	-	-	-	Clean Only
M002	M002-1610_M002-1600	8	390	-	-	-	Clean Only
M002	M002-1620_M002-1540	8	130	-	-	-	Clean Only
M002	M002-1630_M002-1620	8	281	-	-	-	Clean Only

PACP Scores and Sewer Line Recommendations							
Sub-Basin Name	Segment ID	Diameter	Length (lf)	PACP Structural Score	Str Quick Score	Recommended Rehab Action	Inspection Type
M002	M002-1640_M002-1630	8	181	-	-	-	Clean Only
M002	M002-1650_M002-1640	8	112	-	-	-	Clean Only
M002	M002-1660_M002-1650	8	244	-	-	-	Clean Only
M002	M002-1670_M002-1660	8	170	-	-	-	Clean Only
M002	M002-1680_M002-1670	8	138	-	-	-	Clean Only
M002	M002-1700_M002-0480	8	34	0	0000	CMOM	CCTV
M002	M002-1710_M002-1700	8	212	0	0000	CMOM	CCTV
M002	M002-1720_M002-1710	8	115	-	-	-	Inaccessible
M002	M002-1730_M002-1720	8	230	0	0000	CMOM	CCTV
M002	M002-1740_M002-1730	8	270	0	0000	CMOM	CCTV
M002	M002-1750_M002-1740	8	242	0	0000	CMOM	CCTV
M002	M002-1760_M002-1750	8	240	0	0000	CMOM	CCTV
M002	M002-1770_M002-1760	8	249	0	0000	CMOM	CCTV
M002	M002-1780_M002-1740	8	194	0	0000	CMOM	CCTV
M002	M002-1790_M002-1780	8	170	0	0000	CMOM	CCTV
M002	M002-1800_M002-1790	8	102	0	0000	CMOM	CCTV
M002	M002-1810_M002-1800	8	249	4	4121	Point Repair	CCTV
M002	M002-1820_M002-1810	8	109	0	0000	CMOM	CCTV
M002	M002-1830_M002-1780	8	134	0	0000	CMOM	CCTV
M002	M002-1840_M002-1830	8	135	0	0000	CMOM	CCTV
M002	M002-1850_M002-1840	8	247	4	4300	CMOM	CCTV
M002	M002-1860_M002-1850	8	63	4	4900	CMOM	CCTV
M002	M002-2460_M002-0950	12	166	0	0000	CMOM	CCTV
M002	M002-2470_M002-2460	12	27	-	-	-	Clean Only
M002	M002-2480_M002-2470	12	442	-	-	-	Clean Only
M002	M002-2490_M002-2480	12	67	-	-	-	Clean Only
M002	M002-2500_M002-2490	12	488	-	-	-	Clean Only
M002	M002-2510_M002-2500	12	368	-	-	-	Clean Only
M002	M002-2520_M002-2510	10	342	-	-	-	Clean Only
M002	M002-2530_M002-2520	10	180	-	-	-	Clean Only
M002	M002-2540_M002-2530	10	361	-	-	-	Clean Only
M002	M002-2550_M002-2540	8	293	-	-	-	Clean Only
M002	M002-2560_M002-2550	8	202	-	-	-	Clean Only
M002	M002-2570_M002-2560	8	175	-	-	-	Clean Only
M002	M002-2580_M002-2570	8	326	-	-	-	Clean Only
M002	M002-2590_M002-2580	8	287	-	-	-	Clean Only
M002	M002-2600_M002-2590	8	278	-	-	-	Clean Only
M002	M002-2610_M002-2570	8	288	-	-	-	Clean Only
M002	M002-2620_M002-2610	8	296	-	-	-	Clean Only
M002	M002-2630_M002-2620	8	310	-	-	-	Clean Only
M002	M002-2640_M002-2630	8	401	-	-	-	Clean Only
M002	M002-2650_M002-2640	8	394	-	-	-	Clean Only
M002	M002-2660_M002-2530	8	331	-	-	-	Clean Only
M002	M002-2670_M002-2660	8	199	-	-	-	Clean Only

PACP Scores and Sewer Line Recommendations							
Sub-Basin Name	Segment ID	Diameter	Length (lf)	PACP Structural Score	Str Quick Score	Recommended Rehab Action	Inspection Type
M002	M002-2680_M002-2670	8	450	-	-	-	Clean Only
M002	M002-2690_M002-2540	10	387	-	-	-	Clean Only
M002	M002-2700_M002-2690	10	427	-	-	-	Clean Only
M002	M002-2710_M002-2700	8	336	-	-	-	Clean Only
M002	M002-2720_M002-2710	8	320	-	-	-	Clean Only
M002	M002-2730_M002-2720	8	206	-	-	-	Clean Only
M002	M002-2740_M002-2730	8	400	-	-	-	Clean Only
M002	M002-2750_M002-2700	8	108	-	-	-	Clean Only
M002	M002-2760_M002-0455	8	143	0	0000	CMOM	CCTV
M002	M002-2770_M002-2760	8	31	-	-	-	Clean Only
M002	M002-2780_M002-2770	8	67	-	-	-	Clean Only
M002	M002-2790_M002-2780	8	127	-	-	-	Clean Only
M002	M002-2800_M002-2790	8	89	1	1100	CMOM	CCTV
M002	M002-2810_M002-2800	8	293	0	0000	CMOM	CCTV
M002	M002-2820_M002-2820A	8	229	0	0000	CMOM	CCTV
M002	M002-2820A_M002-2810	8	105	0	0000	CMOM	CCTV
M002	M002-2830_M002-2820	8	158	0	0000	CMOM	CCTV
M002	M002-2840_M002-2790	8	294	0	0000	CMOM	CCTV
M002	M002-2850_M002-2840	8	263	2	2100	CMOM	CCTV
M002	M002-2860_M002-2850	8	139	0	0000	CMOM	CCTV
M002	M002-2870_M002-2860	8	162	0	0000	CMOM	CCTV
M002	M002-2880_M002-1810	6	197	4	4400	CMOM	CCTV
M002	M002-2890_M002-1005	8	64	-	-	-	Clean Only
M002	M002-2900_M002-2890	8	419	-	-	-	Clean Only
M002	M002-2910_M002-2900	8	207	-	-	-	Clean Only
M002	M002-2920_M002-1320	12	123	-	-	-	Inaccessible
M002	M002-2930_M002-2920	12	343	0	0000	CMOM	CCTV
M002	M002-2940_M002-2930	12	8	-	-	-	Inaccessible
M002	M003-0005_M002-0532	30	162	0	0000	CMOM	CCTV
P011	P011-0010_P010-0210	21	237	-	-	-	Inaccessible
P011	P011-0020_P011-0010	21	445	-	-	-	Inaccessible
P011	P011-0025_P011-0020	21	121	-	-	-	Inaccessible
P011	P011-0030_P011-0020	8	459	-	-	-	Inaccessible
P011	P011-0040_P011-0030	8	301	-	-	-	Inaccessible
P011	P011-0045_P011-0025	21	155	-	-	-	Inaccessible
P011	P011-0050_P011-0045	18	13	-	-	-	Inaccessible
P011	P011-0055_P011-0045	8	449	-	-	-	Inaccessible
P011	P011-0060_P011-0045	12	44	-	-	-	Inaccessible
P011	P011-0065_P011-0025	10	176	-	-	-	Inaccessible
P011	P011-0070_P011-0065	10	155	-	-	-	Clean Only
P011	P011-0080_P011-0070	10	139	2	2300	CMOM	CCTV
P011	P011-0090_P011-0080	10	350	5	5141	Open Cut	CCTV
P011	P011-0100_P011-0090	10	366	5	5232	Open Cut	CCTV
P011	P011-0110A_P011-0100	8	234	0	0000	CMOM	CCTV

PACP Scores and Sewer Line Recommendations							
Sub-Basin Name	Segment ID	Diameter	Length (lf)	PACP Structural Score	Str Quick Score	Recommended Rehab Action	Inspection Type
P011	P011-0120_P011-0110	8	190	5	5131	Point Repair	CCTV
P011	P011-0130_P011-0050	21	174	-	-	-	Inaccessible
P011	P011-0135_P011-0130	15	61	-	-	-	Inaccessible
P011	P011-0140_P011-0135	18	146	-	-	-	Clean Only
P011	P011-0143_P011-0140	18	43	-	-	-	Clean Only
P011	P011-0145_P011-0140	12	168	-	-	-	Inaccessible
P011	P011-0146_P011-0143	18	212	-	-	-	Clean Only
P011	P011-0150_P011-0145	12	178	-	-	-	Inaccessible
P011	P011-0160_P011-0150	12	176	5	5221	Open Cut	CCTV
P011	P011-0170_P011-0160	12	174	4	4331	Open Cut	CCTV
P011	P011-0180_P011-0170	10	174	0	0000	CMOM	CCTV
P011	P011-0190_P011-0180	10	177	1	1100	CMOM	CCTV
P011	P011-0200_P011-0190	10	158	-	-	-	Clean Only
P011	P011-0210_P011-0200	10	192	-	-	-	Clean Only
P011	P011-0220_P011-0210	8	292	-	-	-	Clean Only
P011	P011-0230_P011-0220	10	54	2	2100	CMOM	CCTV
P011	P011-0240_P011-0230	10	158	5	5132	Pipe Burst	CCTV
P011	P011-0250_P011-0240	10	195	0	0000	CMOM	CCTV
P011	P011-0270_P011-0250	10	389	3	3122	CMOM	CCTV
P011	P011-0280_P011-0146	18	95	0	0000	CMOM	CCTV
P011	P011-0282_P011-0280	15	30	0	0000	CMOM	CCTV
P011	P011-0290_P011-0282	10	316	3	3112	CMOM	CCTV
P011	P011-0300_P011-0290	10	181	5	5141	Open Cut	CCTV
P011	P011-0310_P011-0300	10	169	4	4100	Point Repair	CCTV
P011	P011-0320_P011-0310	10	180	2	2100	CMOM	CCTV
P011	P011-0330_P011-0320	10	171	0	0000	CMOM	CCTV
P011	P011-0348_P011-0342	10	318	-	-	-	Clean Only
P011	P011-0350_P011-0348	10	34	-	-	-	Clean Only
P011	P011-0370_P011-0350	8	350	5	5133	Open Cut	CCTV
P011	P011-0390_P011-0370	8	322	5	5131	Point Repair	CCTV
P011	P011-0391_P011-1390	6	190	-	-	-	Clean Only
P011	P011-0410_P011-0390	8	377	4	4434	Open Cut	CCTV
P011	P011-0430_P011-0430A	8	40	2	2200	CMOM	CCTV
P011	P011-0430A_P011-0410	8	326	2	2100	CMOM	CCTV
P011	P011-0440_P011-0280	18	294	0	0000	CMOM	CCTV
P011	P011-0450_P011-0440	10	91	-	-	-	Clean Only
P011	P011-0455_P011-0450	10	328	-	-	-	Clean Only
P011	P011-0460_P011-0450	10	264	-	-	-	Clean Only
P011	P011-0470_P011-0460	10	110	-	-	-	Inaccessible
P011	P011-0480_P011-0470	10	351	5	5141	Open Cut	CCTV
P011	P011-0485_P011-0480	8	163	-	-	-	Clean Only
P011	P011-0490_P011-0455	8	177	-	-	-	Clean Only
P011	P011-0495_P011-0490	8	104	-	-	-	Clean Only
P011	P011-0500_P011-0490	8	169	-	-	-	Clean Only

PACP Scores and Sewer Line Recommendations							
Sub-Basin Name	Segment ID	Diameter	Length (lf)	PACP Structural Score	Str Quick Score	Recommended Rehab Action	Inspection Type
P011	P011-0510_P011-0485	8	55	0	0000	CMOM	CCTV
P011	P011-0512_P011-0510	8	77	-	-	-	Clean Only
P011	P011-0515_P011-0510	8	131	3	3521	CMOM	CCTV
P011	P011-0516_P011-0455	10	293	-	-	-	Clean Only
P011	P011-0517_P011-0512	8	273	-	-	-	Clean Only
P011	P011-0520_P011-0516	8	72	-	-	-	Clean Only
P011	P011-0525_P011-0520	8	103	-	-	-	Clean Only
P011	P011-0530_P011-0525	8	135	3	3522	CMOM	CCTV
P011	P011-0540_P011-0530	8	60	-	-	-	Inaccessible
P011	P011-0550_P011-0530	8	110	2	2114	CMOM	CCTV
P011	P011-0560_P011-0560A	8	155	5	5132	CIPP	CCTV
P011	P011-0560A_P011-0550	8	155	0	0000	CMOM	CCTV
P011	P011-0570_P011-0282	15	350	-	-	-	Clean Only
P011	P011-0580_P011-0570	15	323	3	3300	CMOM	CCTV
P011	P011-0600_P011-0580	15	341	0	0000	CMOM	CCTV
P011	P011-0620_P011-0600	15	352	5	5122	Point Repair	CCTV
P011	P011-0630_P011-0620	15	179	2	2500	CMOM	CCTV
P011	P011-0640_P011-0630	15	165	3	3122	CMOM	CCTV
P011	P011-0650_P011-0640	8	166	3	3223	CMOM	CCTV
P011	P011-0660_P011-0650	8	175	2	2100	CMOM	CCTV
P011	P011-0670_P011-0660	8	152	2	2100	CMOM	CCTV
P011	P011-0680_P011-0670	8	212	2	2200	CMOM	CCTV
P011	P011-0690_P011-0680	8	161	2	2200	CMOM	CCTV
P011	P011-0700_P011-0690	8	176	3	3124	CMOM	CCTV
P011	P011-0710_P011-0700	8	121	4	4131	Pipe Burst	CCTV
P011	P011-0720_P011-0720A	8	236	-	-	-	Clean Only
P011	P011-0720A_P011-0710	8	20	-	-	-	Clean Only
P011	P011-0730_P011-0640	12	351	0	0000	CMOM	CCTV
P011	P011-0740_P011-0730	8	164	2	2100	CMOM	CCTV
P011	P011-0750_P011-0740	8	181	5	5443	Open Cut	CCTV
P011	P011-0760_P011-0750	8	173	5	5532	Open Cut	CCTV
P011	P011-0770_P011-0760	8	177	5	5131	Pipe Burst	CCTV
P011	P011-0780_P011-0770	8	172	2	2100	CMOM	CCTV
P011	P011-0790_P011-0780	8	175	3	3100	CMOM	CCTV
P011	P011-0800_P011-0790	8	280	-	-	-	Clean Only
P011	P011-0820_P011-0730	8	175	2	2100	CMOM	CCTV
P011	P011-0830_P011-0820	8	180	0	0000	CMOM	CCTV
P011	P011-0840_P011-0830	8	175	0	0000	CMOM	CCTV
P011	P011-0850_P011-0840	8	175	0	0000	CMOM	CCTV
P011	P011-0860_P011-0850	8	168	-	-	-	Inaccessible
P011	P011-0870_P011-0860	8	182	-	-	-	Inaccessible
P011	P011-0880_P011-0870	8	175	-	-	-	Inaccessible
P011	P011-0890_P011-0880	8	175	-	-	-	Inaccessible
P011	P011-0895_P011-0890	8	183	-	-	-	Inaccessible

PACP Scores and Sewer Line Recommendations							
Sub-Basin Name	Segment ID	Diameter	Length (lf)	PACP Structural Score	Str Quick Score	Recommended Rehab Action	Inspection Type
P011	P011-0900_P011-0895	8	147	-	-	-	Inaccessible
P011	P011-0910_P011-0730	12	350	2	2100	CMOM	CCTV
P011	P011-0915_P011-0910	10	177	5	5131	CIPP	CCTV
P011	P011-0920_P011-0915	10	175	3	3521	CMOM	CCTV
P011	P011-0925_P011-0920	10	174	5	5131	Point Repair	CCTV
P011	P011-0930_P011-0925	10	175	3	3521	CMOM	CCTV
P011	P011-0980_P011-0930	8	350	5	5643	Open Cut	CCTV
P011	P011-0990_P011-0980	8	289	-	-	-	Clean Only
P011	P011-1020_P011-0980	8	348	4	4100	Point Repair	CCTV
P011	P011-1060_P011-1020	8	200	0	0000	CMOM	CCTV
P011	P011-1070_P011-1060	8	343	-	-	-	Clean Only
P011	P011-1080_P011-1070	8	243	0	0000	CMOM	CCTV
P011	P011-1090_P011-1080	8	20	0	0000	CMOM	CCTV
P011	P011-1140_P011-1090	8	400	-	-	-	Clean Only
P011	P011-1150_P011-1140	8	320	-	-	-	Inaccessible
P011	P011-1160_P011-0910	10	172	5	5132	Point Repair	CCTV
P011	P011-1170_P011-1160	10	176	5	5100	Point Repair	CCTV
P011	P011-1180_P011-1170	10	353	5	5131	CIPP	CCTV
P011	P011-1190_P011-1180	8	185	4	4332	Open Cut	CCTV
P011	P011-1200_P011-1190	8	164	4	4631	CIPP	CCTV
P011	P011-1210_P011-1200	8	173	5	5143	CIPP	CCTV
P011	P011-1220_P011-1210	8	178	5	5100	Point Repair	CCTV
P011	P011-1225_P011-1220	8	171	3	3100	CMOM	CCTV
P011	P011-1230_P011-1225	8	179	5	5231	Open Cut	CCTV
P011	P011-1240_P011-1200	10	350	4	4233	Open Cut	CCTV
P011	P011-1260_P011-1240	8	350	5	5143	Point Repair	CCTV
P011	P011-1280_P011-1260	8	350	4	4131	Point Repair	CCTV
P011	P011-1300_P011-1280	8	286	0	0000	CMOM	CCTV
P011	P011-1310_P011-1240	10	175	2	2200	CMOM	CCTV
P011	P011-1320_P011-1310	8	351	5	514D	CIPP	CCTV
P011	P011-1330_P011-1320	8	179	3	3112	CMOM	CCTV
P011	P011-1340_P011-1330	8	338	-	-	-	Inaccessible
P011	P011-1350_P011-1310	10	176	3	3828	CMOM	CCTV
P011	P011-1350A_P011-1350	10	179	5	513A	Open Cut	CCTV
P011	P011-1360_P011-1350	8	176	0	0000	CMOM	CCTV
P011	P011-1370_P011-1360	8	175	0	0000	CMOM	CCTV
P011	P011-1390_P011-1370	8	349	0	0000	CMOM	CCTV
P011	P011-1390A_P011-1390	8	196	0	0000	CMOM	CCTV
P011	P011-1420_P011-1350A	10	171	5	5241	Open Cut	CCTV
P011	P011-1430_P011-1420	8	460	-	-	-	Inaccessible
P011	P011-1440_P011-1420	8	171	3	3100	CMOM	CCTV
P011	P011-1450_P011-1440	8	181	3	3200	CMOM	CCTV
P011	P011-1460_P011-0130	12	180	-	-	-	Inaccessible
P011	P011-1465_P011-1460	10	156	-	-	-	Inaccessible

PACP Scores and Sewer Line Recommendations							
Sub-Basin Name	Segment ID	Diameter	Length (lf)	PACP Structural Score	Str Quick Score	Recommended Rehab Action	Inspection Type
P011	P011-1470_P011-1465	10	130	-	-	-	Inaccessible
P011	P011-1490_P011-1470	10	350	5	5441	Open Cut	CCTV
P011	P011-1500_P011-1490	10	174	-	-	-	Clean Only
P011	P011-1510_P011-1500	10	177	-	-	-	Clean Only
P011	P011-1530_P011-1510	10	351	-	-	-	Clean Only
P011	P011-1550_P011-1530	8	350	5	5332	Open Cut	CCTV
P011	P011-1570_P011-1550	8	347	5	5141	Open Cut	CCTV
P011	P011-1580_P011-1570	8	374	5	5542	Open Cut	CCTV
P011	P011-1590_P011-1580	8	351	5	5532	Open Cut	CCTV
P011	P011-1600_P011-1590	8	65	-	-	-	Clean Only
P011	P011-1690_P011-1590	8	351	5	5441	Open Cut	CCTV
P011	P011-1700_P011-1690	10	244	5	5211	Open Cut	CCTV
P011	P011-1710_P011-1690	8	360	5	5141	CIPP	CCTV
P011	P011-1720_P011-1710	8	350	5	5541	CIPP	CCTV
P011	P011-1730_P011-1730A	8	93	2	2100	CMOM	CCTV
P011	P011-1730A_P011-1730B	8	129	4	4132	Point Repair	CCTV
P011	P011-1730B_P011-1730C	8	41	0	0000	CMOM	CCTV
P011	P011-1730C_P011-1720	8	87	3	3100	CMOM	CCTV
P011	P011-1740_P011-1730	8	265	5	5B41	Open Cut	CCTV
P011	P011-1750_P011-1570	8	29	-	-	-	Inaccessible
P011	P011-1760_P011-1750	8	320	5	5131	Point Repair	CCTV
P011	P011-1780_P011-1760	8	351	4	4333	CIPP	CCTV
P011	P011-1800_P011-1780	8	349	5	5134	Open Cut	CCTV
P011	P011-1820_P011-1800	8	287	2	2400	CMOM	CCTV
P011	P011-1840_P011-1780	8	358	3	3212	CMOM	CCTV
P011	P011-1850_P011-1840	8	165	5	5100	Open Cut	CCTV
P011	P011-1870_P011-1840	8	285	5	5723	Point Repair	CCTV
P011	P011-1880_P011-1840	8	353	5	5342	Pipe Burst	CCTV
P011	P011-1900_P011-1880	8	289	5	5141	Point Repair	CCTV
P011	P011-1920_P011-1880	8	364	5	5231	Open Cut	CCTV
P011	P011-1930_P011-1920	8	355	4	4236	Open Cut	CCTV
P011	P011-1940_P011-1930	8	354	5	514A	Open Cut	CCTV
P011	P011-1950_P011-1940	8	361	5	5147	Open Cut	CCTV
P011	P011-1970_P011-1960	8	113	0	0000	CMOM	CCTV
P011	P011-1973_P011-1960	8	126	0	0000	CMOM	CCTV
P011	P011-1976_P011-1973	8	126	0	0000	CMOM	CCTV
P011	P011-1980_P011-1930	8	488	5	5641	Open Cut	CCTV
P011	P011-1980A_P011-1980	8	175	3	3322	CMOM	CCTV
P011	P011-1990_P011-1980A	8	298	4	4232	Point Repair	CCTV
P011	P011-2000_P011-1460	12	195	-	-	-	Inaccessible
P011	P011-2010_P011-1470	8	180	-	-	-	Clean Only
P011	P011-2015_P011-2010	8	168	5	5222	Open Cut	CCTV
P011	P011-2020_P011-2015	8	182	0	0000	CMOM	CCTV
P011	P011-2040_P011-2020	8	349	-	-	-	Clean Only

PACP Scores and Sewer Line Recommendations							
Sub-Basin Name	Segment ID	Diameter	Length (lf)	PACP Structural Score	Str Quick Score	Recommended Rehab Action	Inspection Type
P011	P011-2050_P011-2040	8	290	-	-	-	Clean Only
P011	P011-2070_P011-2000	12	184	-	-	-	Inaccessible
P011	P011-2090_P011-2070	8	487	-	-	-	Inaccessible
P011	P011-2110_P011-2090	8	351	5	5641	Open Cut	CCTV
P011	P011-2130_P011-2110	8	352	5	5331	Point Repair	CCTV
P011	P011-2130A_P011-2130	8	61	-	-	-	Clean Only
P011	P011-2150_P011-2130A	8	289	-	-	-	Clean Only
P011	P011-2170_P011-2150	8	288	-	-	-	Clean Only
P011	P011-2190_P011-2070	12	189	-	-	-	Inaccessible
P011	P011-2200_P011-2190	12	188	-	-	-	Inaccessible
P011	P011-2210_P011-2200	8	174	-	-	-	Inaccessible
P011	P011-2220_P011-2210	8	174	-	-	-	Inaccessible
P011	P011-2240_P011-2220	8	351	5	5642	Open Cut	CCTV
P011	P011-2260_P011-2240	8	287	-	-	-	Clean Only
P011	P011-2280_P011-2200	12	180	-	-	-	Inaccessible
P011	P011-2290_P011-2280	12	206	-	-	-	Inaccessible
P011	P011-2300_P011-2290	8	201	-	-	-	Inaccessible
P011	P011-2320_P011-2300	8	351	4	4334	Open Cut	CCTV
P011	P011-2340_P011-2320	8	351	5	5641	Open Cut	CCTV
P011	P011-2360_P011-2340	8	287	5	5541	Open Cut	CCTV
P011	P011-2380_P011-2290	10	379	-	-	-	Inaccessible
P011	P011-2400_P011-2380	8	406	-	-	-	Inaccessible
P011	P011-2420_P011-2400	8	351	3	3121	CMOM	CCTV
P011	P011-2440_P011-2420	8	287	5	5145	Open Cut	CCTV
P011	P011-2450_P011-2380	10	231	-	-	-	Inaccessible
P011	P011-2455_P011-2450	8	52	-	-	-	Inaccessible
P011	P011-2460_P011-2450	10	148	-	-	-	Inaccessible
P011	P011-2470_P011-2455	8	258	-	-	-	Clean Only
P011	P011-2475_P011-2470	8	155	-	-	-	Clean Only
P011	P011-2480_P011-2475	8	11	0	0000	CMOM	CCTV
P011	P011-2500_P011-2480	8	352	5	5146	Open Cut	CCTV
P011	P011-2510_P011-2500	8	351	5	5148	Open Cut	CCTV
P011	P011-2530_P011-2510	8	297	5	544B	Open Cut	CCTV
P011	P011-2540_P011-2530	8	358	-	-	-	Clean Only
P011	P011-2550_P011-2540	8	380	5	5432	Point Repair	CCTV
P011	P011-2560_P011-2550	8	351	4	4432	CIPP	CCTV
P011	P011-2570_P011-2560	8	351	5	5246	CIPP	CCTV
P011	P011-2580_P011-2570	8	319	5	5142	Point Repair	CCTV
P011	P011-2590_P011-2460	10	387	-	-	-	Inaccessible
P011	P011-2610_P011-2590	8	450	3	3121	CMOM	CCTV
P011	P011-2630_P011-2610	8	350	4	4100	Point Repair	CCTV
P011	P011-2650_P011-2630	8	298	5	5142	Point Repair	CCTV
P011	P011-2660_P011-2650	8	442	4	4135	Open Cut	CCTV
P011	P011-2670_P011-2660	8	350	5	5245	Open Cut	CCTV

PACP Scores and Sewer Line Recommendations							
Sub-Basin Name	Segment ID	Diameter	Length (lf)	PACP Structural Score	Str Quick Score	Recommended Rehab Action	Inspection Type
P011	P011-2680_P011-2670	8	350	5	5431	Point Repair	CCTV
P011	P011-2690_P011-2680	8	351	5	564A	Pipe Burst	CCTV
P011	P011-2700_P011-2690	8	265	4	4100	Point Repair	CCTV
P011	P011-2710_P011-2590	10	217	-	-	-	Inaccessible
P011	P011-2720_P011-2710	10	181	3	3121	CMOM	CCTV
P011	P011-2730_P011-2720	8	247	5	5131	Point Repair	CCTV
P011	P011-2760_P011-2740	8	336	4	4632	Open Cut	CCTV
P011	P011-2780_P011-2760	8	302	5	5131	Point Repair	CCTV
P011	P011-EOL_P011-0480	8	29	3	3123	CMOM	CCTV
P012	P012-0010_P002-0590	12	100	0	0000	CMOM	CCTV
P012	P012-0020_P012-0010	12	102	0	0000	CMOM	CCTV
P012	P012-0030_P012-0020	12	57	0	0000	CMOM	CCTV
P012	P012-0050_P012-0030	12	95	0	0000	CMOM	CCTV
P012	P012-0070_P012-0050	8	363	-	-	-	Inaccessible
P012	P012-0090_P012-0070	8	357	-	-	-	Inaccessible
P012	P012-0110_P012-0090	8	354	-	-	-	Inaccessible
P012	P012-0130_P012-0110	8	352	-	-	-	Inaccessible
P012	P012-0150_P012-0130	8	350	-	-	-	Inaccessible
P012	P012-0170_P012-0150	8	405	-	-	-	Inaccessible
P012	P012-0210_P012-0170	8	272	-	-	-	Inaccessible
P012	P012-0220_P012-0210	8	49	0	0000	CMOM	CCTV
P012	P012-0230_P012-0220	8	14	0	0000	CMOM	CCTV
P012	P012-0232_P012-0230	8	113	-	-	-	Clean Only
P012	P012-0234_P012-0232	8	125	-	-	-	Clean Only
P012	P012-0236_P012-0234	8	144	-	-	-	Clean Only
P012	P012-0240_P012-0230	8	386	0	0000	CMOM	CCTV
P012	P012-0243_P012-0240	8	49	0	0000	CMOM	CCTV
P012	P012-0250_P012-0240	8	172	5	5434	Open Cut	CCTV
P012	P012-0260_P012-0250	8	160	-	-	-	Inaccessible
P012	P012-0270_P012-0243	8	301	0	0000	CMOM	CCTV
P012	P012-0280_P012-0270	8	381	3	3423	CMOM	CCTV
P012	P012-0290_P012-0030	12	32	-	-	-	Clean Only
P012	P012-0300_P012-0290	12	133	-	-	-	Clean Only
P012	P012-0310_P012-0300	12	249	-	-	-	Clean Only
P012	P012-0320_P012-0310	12	82	-	-	-	Clean Only
P012	P012-0330_P012-0320	8	216	-	-	-	Clean Only
P012	P012-0340_P012-0330	8	304	-	-	-	Clean Only
P012	P012-0350_P012-0340	8	299	-	-	-	Clean Only
P012	P012-0360_P012-0350	8	209	-	-	-	Clean Only
P012	P012-0370_P012-0360	8	17	-	-	-	Clean Only
P012	P012-0380_P012-0370	8	272	-	-	-	Clean Only
P012	P012-0390_P012-0380	8	305	-	-	-	Clean Only
P012	P012-0400_P012-0310	12	153	-	-	-	Clean Only
P012	P012-0410_P012-0400	12	209	-	-	-	Clean Only

PACP Scores and Sewer Line Recommendations							
Sub-Basin Name	Segment ID	Diameter	Length (lf)	PACP Structural Score	Str Quick Score	Recommended Rehab Action	Inspection Type
P012	P012-0420_P012-0410	12	326	-	-	-	Clean Only
P012	P012-0430_P012-0420	12	299	-	-	-	Clean Only
P012	P012-0440_P012-0430	12	214	-	-	-	Clean Only
P012	P012-0450_P012-0440	12	276	-	-	-	Clean Only
P012	P012-0460_P012-0450	12	301	-	-	-	Clean Only
P012	P012-0470_P012-0460	12	99	-	-	-	Clean Only
P012	P012-0480_P012-0470	12	400	-	-	-	Clean Only
P012	P012-0490_P012-0480	12	24	-	-	-	Clean Only
P012	P012-0500_P012-0490	12	178	-	-	-	Clean Only
P012	P012-0510_P012-0500	12	300	-	-	-	Clean Only
P012	P012-0520_P012-0510	12	310	-	-	-	Clean Only
P012	P012-0530_P012-0520	12	66	-	-	-	Clean Only
P012	P012-0540_P012-0530	12	61	-	-	-	Clean Only
RB01	RB01-0020_RB01-0001	8	26	-	-	-	Not Inspected
RB01	RB01-0030_RB01-0020	8	184	-	-	-	Not Inspected
RB01	RB01-0040_RB01-0030	8	376	-	-	-	Not Inspected
RB01	RB01-0050_RB01-0040	8	353	-	-	-	Not Inspected
RB01	RB01-0060_RB01-0050	8	289	3	3100	CMOM	CCTV
RB01	RB01-0070_RB01-0060	8	114	3	3121	CMOM	CCTV
RB01	RB01-0080_RB01-0030	8	128	-	-	-	Not Inspected
RB01	RB01-0090_RB01-0080	8	148	-	-	-	Not Inspected
RB01	RB01-0100_RB01-0090	8	130	-	-	-	Not Inspected
RB01	RB01-0110_RB01-0100	8	257	-	-	-	Not Inspected
RB01	RB01-0120_RB01-0110	8	257	-	-	-	Not Inspected
RB01	RB01-0130_RB01-0100	8	373	3	3100	CMOM	CCTV
RB01	RB01-0140_RB01-0130	8	209	2	2100	CMOM	CCTV
RB01	RB01-0150_RB01-0130	8	114	3	3100	CMOM	CCTV
RB01	RB01-0160_RB01-0150	8	383	5	5132	CMOM	CCTV
RB01	RB01-0180_RB01-0001	36	136	0	0.000	CMOM	CCTV
RB01	RB01-0190_RB01-0180	8	235	5	5100	Point Repair	CCTV
RB01	RB01-0200_RB01-0190	8	130	0	0.000	CMOM	CCTV
RB01	RB01-0210_RB01-0200	6	226	0	0.000	CMOM	CCTV
RB01	RB01-0220_RB01-0200	6	401	2	2100	CMOM	CCTV
RB01	RB01-0230_RB01-0200	6	167	3	3100	CMOM	CCTV
RB01	RB01-0240_RB01-0230	8	86	3	3122	CMOM	CCTV
RB01	RB01-0250_RB01-0240	8	136	5	5132	CMOM	CCTV
RB01	RB01-0260_RB01-0250	8	263	3	3323	CMOM	CCTV
RB01	RB01-0270_RB01-0250	8	321	-	-	-	Not Inspected
RB01	RB01-0280_RB01-0270	8	258	-	-	-	Not Inspected
RB01	RB01-0290_RB01-0270	8	440	-	-	-	Not Inspected
RB01	RB01-0300_RB01-0290	6	64	-	-	-	Not Inspected
RB01	RB01-0310_RB01-0300	6	115	-	-	-	Not Inspected
RB01	RB01-0320_RB01-0180	8	251	4	4133	Point Repair	CCTV
RB01	RB01-0330_RB01-0320	8	101	5	5100	CMOM	CCTV

PACP Scores and Sewer Line Recommendations							
Sub-Basin Name	Segment ID	Diameter	Length (lf)	PACP Structural Score	Str Quick Score	Recommended Rehab Action	Inspection Type
RB01	RB01-0340_RB01-0330	8	136	0	0.000	CMOM	CCTV
RB01	RB01-0350_RB01-0340	6	166	0	0.000	CMOM	CCTV
RB01	RB01-0360_RB01-0350	6	249	0	0.000	CMOM	CCTV
RB01	RB01-0370_RB01-0340	8	159	3	3100	CMOM	CCTV
RB01	RB01-0380_RB01-0370	6	202	0	0.000	CMOM	CCTV
RB01	RB01-0390_RB01-0380	8	168	0	0.000	CMOM	CCTV
RB01	RB01-0400_RB01-0390	8	58	0	0.000	CMOM	CCTV
RB01	RB01-0410_RB01-0390	8	186	0	0.000	CMOM	CCTV
RB01	RB01-0420_RB01-0410	6	105	3	312C	CMOM	CCTV
RB01	RB01-0430_RB01-0370	8	120	3	3100	CMOM	CCTV
RB01	RB01-0440_RB01-0430	8	397	5	5131	CMOM	CCTV
RB01	RB01-0450_RB01-0440	8	178	4	4123	Point Repair	CCTV
RB01	RB01-0460_RB01-0450	8	140	-	-	-	Not Inspected
RB01	RB01-0470_RB01-0460	8	190	-	-	-	Not Inspected
RB01	RB01-0480_RB01-0470	8	112	-	-	-	Not Inspected
RB01	RB01-0490_RB01-0450	8	100	-	-	-	Not Inspected
RB01	RB01-0500_RB01-0490	8	209	-	-	-	Not Inspected
RB01	RB01-0505_RB01-0430	8	15	0	0.000	CMOM	CCTV
RB01	RB01-0510_RB01-0505	8	211	0	0.000	CMOM	CCTV
RB01	RB01-0520_RB01-0510	8	217	0	0.000	CMOM	CCTV
RB01	RB01-0530_RB01-0520	6	70	2	2A00	CMOM	CCTV
RB01	RB01-0540_RB01-0530	6	325	5	5131	Point Repair	CCTV
RB01	RB01-0550_RB01-0540	6	251	2	2111	CMOM	CCTV
RB01	RB01-0560_RB01-0550	6	295	3	312J	CMOM	CCTV
RB01	RB01-0570_RB01-0560	6	169	4	4134	Point Repair	CCTV
RB01	RB01-0580_RB01-0530	6	112	0	0.000	CMOM	CCTV
RB01	RB01-0590_RB01-0580	6	168	3	3111	CMOM	CCTV
RB01	RB01-0600_RB01-0590	6	265	3	3313	CMOM	CCTV
RB01	RB01-0610_RB01-0600	6	172	3	3213	CMOM	CCTV
RB01	RB01-0620_RB01-0530	6	342	2	2100	CMOM	CCTV
RB01	RB01-0630_RB01-0620	6	252	2	2H00	CMOM	CCTV
RB01	RB01-0640_RB01-0630	6	459	2	2100	CMOM	CCTV
RB01	RB01-0650_RB01-0640	6	203	4	4100	CMOM	CCTV
RB01	RB01-0660_RB01-0650	6	216	3	3122	CMOM	CCTV
RB01	RB01-0670_RB01-0540	8	145	0	0.000	CMOM	CCTV
RB01	RB01-0680_RB01-0670	6	111	0	0.000	CMOM	CCTV
RB01	RB01-0690_RB01-0670	6	233	0	0.000	CMOM	CCTV
RB01	RB01-0700_RB01-0690	6	71	4	4100	CMOM	CCTV
Z008	Z003-0830_Z008-0820	8	139	0	0000	CMOM	CCTV
Z008	Z008-0150_Z006-2880	15	634	-	-	-	Inaccessible
Z008	Z008-0160_Z008-0150	10	110	-	-	-	Clean Only
Z008	Z008-0165_Z008-0160	10	15	-	-	-	Clean Only
Z008	Z008-0170_Z008-0165	10	272	0	0000	CMOM	CCTV
Z008	Z008-0180_Z008-0170	10	251	3	3211	CMOM	CCTV

PACP Scores and Sewer Line Recommendations							
Sub-Basin Name	Segment ID	Diameter	Length (lf)	PACP Structural Score	Str Quick Score	Recommended Rehab Action	Inspection Type
Z008	Z008-0190_Z008-0180	10	256	0	0000	CMOM	CCTV
Z008	Z008-0200_Z008-0190	10	243	0	0000	CMOM	CCTV
Z008	Z008-0210_Z008-0200	10	68	0	0000	CMOM	CCTV
Z008	Z008-0220_Z008-0210	10	234	0	0000	CMOM	CCTV
Z008	Z008-0230_Z008-0220	10	255	1	1H00	CMOM	CCTV
Z008	Z008-0240_Z008-0230	10	176	3	3100	CMOM	CCTV
Z008	Z008-0250_Z008-0240	10	113	0	0000	CMOM	CCTV
Z008	Z008-0260_Z008-0250	10	148	0	0000	CMOM	CCTV
Z008	Z008-0270_Z008-0260	10	77	0	0000	CMOM	CCTV
Z008	Z008-0277_Z008-0270	10	330	1	1100	CMOM	CCTV
Z008	Z008-0280_Z008-0277	10	71	0	0000	CMOM	CCTV
Z008	Z008-0290_Z008-0280	8	276	1	1200	CMOM	CCTV
Z008	Z008-0300_Z008-0290	10	162	0	0000	CMOM	CCTV
Z008	Z008-0310_Z008-0280	8	34	-	-	-	Clean Only
Z008	Z008-0320_Z008-0310	8	208	-	-	-	Clean Only
Z008	Z008-0330_Z008-0320	8	2	-	-	-	Clean Only
Z008	Z008-0340_Z008-0330	8	228	-	-	-	Clean Only
Z008	Z008-0345_Z008-0340	8	176	-	-	-	Clean Only
Z008	Z008-0350_Z008-0345	8	218	0	0000	CMOM	CCTV
Z008	Z008-0360_Z008-0350	6	221	0	0000	CMOM	CCTV
Z008	Z008-0370_Z008-0360	6	68	0	0000	CMOM	CCTV
Z008	Z008-0380_Z008-0370	6	100	0	0000	CMOM	CCTV
Z008	Z008-0390_Z008-0380	6	243	0	0000	CMOM	CCTV
Z008	Z008-0410_Z008-0400	6	159	0	0000	CMOM	CCTV
Z008	Z008-0420_Z008-0410	6	126	-	-	-	Inaccessible
Z008	Z008-0430_Z008-0410	6	395	0	0000	CMOM	CCTV
Z008	Z008-0440_Z008-0430	6	216	0	0000	CMOM	CCTV
Z008	Z008-0450_Z008-0440	6	397	0	0000	CMOM	CCTV
Z008	Z008-0460_Z008-0450	6	399	0	0000	CMOM	CCTV
Z008	Z008-0470_Z008-0350	6	295	-	-	-	Inaccessible
Z008	Z008-0480_Z008-0470	6	368	0	0000	CMOM	CCTV
Z008	Z008-0490_Z008-0480	6	6	0	0000	CMOM	CCTV
Z008	Z008-0500_Z008-0490	6	180	0	0000	CMOM	CCTV
Z008	Z008-0510_Z008-0500	6	185	0	0000	CMOM	CCTV
Z008	Z008-0520_Z008-0510	6	43	0	0000	CMOM	CCTV
Z008	Z008-0530_Z008-0520	6	118	0	0000	CMOM	CCTV
Z008	Z008-0540_Z008-0530	6	136	0	0000	CMOM	CCTV
Z008	Z008-0550_Z008-0540	6	139	0	0000	CMOM	CCTV
Z008	Z008-0560_Z008-0550	6	105	0	0000	CMOM	CCTV
Z008	Z008-0570_Z008-0540	6	149	0	0000	CMOM	CCTV
Z008	Z008-0580_Z008-0570	6	139	5	5121	Point Repair	CCTV
Z008	Z008-0590_Z008-0580	6	107	0	0000	CMOM	CCTV
Z008	Z008-0600_Z008-0590	6	208	1	1100	CMOM	CCTV
Z008	Z008-0610_Z008-0590	6	178	1	1200	CMOM	CCTV

PACP Scores and Sewer Line Recommendations							
Sub-Basin Name	Segment ID	Diameter	Length (lf)	PACP Structural Score	Str Quick Score	Recommended Rehab Action	Inspection Type
Z008	Z008-0620_Z008-0610	6	163	0	0000	CMOM	CCTV
Z008	Z008-0630_Z008-0620	6	193	0	0000	CMOM	CCTV
Z008	Z008-0640_Z008-0510	6	162	4	4100	Point Repair	CCTV
Z008	Z008-0650_Z008-0640	6	367	1	1100	CMOM	CCTV
Z008	Z008-0660_Z008-0650	6	234	3	3122	CMOM	CCTV
Z008	Z008-0670_Z008-0660	6	207	0	0000	CMOM	CCTV
Z008	Z008-0680_Z008-0670	6	401	3	3100	CMOM	CCTV
Z008	Z008-0690_Z008-0680	6	181	0	0000	CMOM	CCTV
Z008	Z008-0700_Z008-0690	6	55	1	1200	CMOM	CCTV
Z008	Z008-0710_Z008-0700	6	399	-	-	-	Clean Only
Z008	Z008-0720_Z008-0700	6	144	5	5231	Open Cut	CCTV
Z008	Z008-0730_Z008-0720	6	94	5	5100	Point Repair	CCTV
Z008	Z008-0740_Z008-0720	6	25	0	0000	CMOM	CCTV
Z008	Z008-0750_Z008-0740	6	92	0	0000	CMOM	CCTV
Z008	Z008-0760_Z008-0740	6	320	3	3100	CMOM	CCTV
Z008	Z008-0770_Z008-0760	6	104	3	3111	CMOM	CCTV
Z008	Z008-0780_Z008-0760	6	214	0	0000	CMOM	CCTV
Z008	Z008-0790_Z008-0780	6	98	0	0000	CMOM	CCTV
Z008	Z008-0795_Z008-0790	6	197	0	0000	CMOM	CCTV
Z008	Z008-0800_Z008-0640	6	80	2	2100	CMOM	CCTV
Z008	Z008-0810_Z008-0800	6	123	2	2100	CMOM	CCTV
Z008	Z008-0820_Z008-0810	6	38	0	0000	CMOM	CCTV
Z008	Z008-0830_Z008-1280	8	42	0	0000	CMOM	CCTV
Z008	Z008-0840_Z008-0830	6	22	0	0000	CMOM	CCTV
Z008	Z008-0850_Z008-0840	6	365	3	3121	CMOM	CCTV
Z008	Z008-0860_Z008-0850	6	314	0	0000	CMOM	CCTV
Z008	Z008-0870_Z008-0860	6	38	0	0000	CMOM	CCTV
Z008	Z008-0880_Z008-0870	6	130	2	2100	CMOM	CCTV
Z008	Z008-0890_Z008-0880	6	142	0	0000	CMOM	CCTV
Z008	Z008-0900_Z008-0890	6	62	0	0000	CMOM	CCTV
Z008	Z008-0910_Z008-0870	6	290	0	0000	CMOM	CCTV
Z008	Z008-0920_Z008-0910	6	198	5	5122	Open Cut	CCTV
Z008	Z008-0930_Z008-0920	6	40	2	2100	CMOM	CCTV
Z008	Z008-0940_Z008-0840	6	324	0	0000	CMOM	CCTV
Z008	Z008-0950_Z008-0940	6	183	0	0000	CMOM	CCTV
Z008	Z008-0960_Z008-0950	8	215	0	0000	CMOM	CCTV
Z008	Z008-0970_Z008-0960	8	119	0	0000	CMOM	CCTV
Z008	Z008-0980_Z008-0920	6	7	-	-	-	Clean Only
Z008	Z008-0990_Z008-0980	6	134	-	-	-	Clean Only
Z008	Z008-1000_Z008-0940	6	36	0	0000	CMOM	CCTV
Z008	Z008-1040_Z008-0970	8	57	0	0000	CMOM	CCTV
Z008	Z008-1050_Z008-1040	8	101	0	0000	CMOM	CCTV
Z008	Z008-1060_Z008-1040	8	339	-	-	-	Clean Only
Z008	Z008-1070_Z008-1060	8	140	-	-	-	Clean Only

PACP Scores and Sewer Line Recommendations							
Sub-Basin Name	Segment ID	Diameter	Length (lf)	PACP Structural Score	Str Quick Score	Recommended Rehab Action	Inspection Type
Z008	Z008-1080_Z008-1070	8	104	-	-	-	Clean Only
Z008	Z008-1090_Z008-1080	8	132	-	-	-	Clean Only
Z008	Z008-1100_Z008-1090	8	81	-	-	-	Clean Only
Z008	Z008-1110_Z008-1100	8	279	-	-	-	Clean Only
Z008	Z008-1120_Z008-1110	8	107	-	-	-	Clean Only
Z008	Z008-1130_Z008-1120	8	94	-	-	-	Clean Only
Z008	Z008-1140_Z008-1130	8	222	-	-	-	Clean Only
Z008	Z008-1150_Z008-1140	8	95	-	-	-	Clean Only
Z008	Z008-1160_Z008-1150	8	89	-	-	-	Clean Only
Z008	Z008-1170_Z008-1160	8	90	-	-	-	Clean Only
Z008	Z008-1180_Z008-0300	8	101	-	-	-	Clean Only
Z008	Z008-1190_Z008-1180	8	233	-	-	-	Clean Only
Z008	Z008-1200_Z008-1190	8	164	-	-	-	Clean Only
Z008	Z008-1210_Z008-1200	8	56	-	-	-	Clean Only
Z008	Z008-1220_Z008-1210	6	52	-	-	-	Inaccessible
Z008	Z008-1230_Z008-1210	8	361	-	-	-	Clean Only
Z008	Z008-1240_Z008-1230	8	171	-	-	-	Clean Only
Z008	Z008-1250_Z008-1240	8	182	-	-	-	Clean Only
Z008	Z008-1260_Z008-1250	8	58	-	-	-	Clean Only
Z008	Z008-1270_Z008-1260	8	283	-	-	-	Clean Only
Z008	Z008-1280_Z008-1270	8	376	0	0000	CMOM	CCTV
Z008	Z008-1290_Z008-1270	8	243	-	-	-	Clean Only
Z008	Z008-1300_Z008-1290	6	138	-	-	-	Clean Only
Z008	Z008-1310_Z008-1290	8	49	-	-	-	Clean Only
Z008	Z008-1320_Z008-1310	8	107	-	-	-	Clean Only
Z008	Z008-1330_Z008-1320	6	81	-	-	-	Clean Only
Z008	Z008-1340_Z008-1320	8	248	-	-	-	Clean Only
Z008	Z008-1350_Z008-1340	8	353	-	-	-	Clean Only
Z008	Z008-1360_Z008-1350	8	75	-	-	-	Clean Only
Z008	Z008-1370_Z008-1360	8	78	-	-	-	Clean Only
Z008	Z008-1380_Z008-1370	8	130	-	-	-	Clean Only
Z008	Z008-1390_Z008-1380	8	109	-	-	-	Clean Only
Z008	Z008-1400_Z008-1390	8	128	-	-	-	Clean Only
Z008	Z008-1410_Z008-0950	6	246	0	0000	CMOM	CCTV
Z008	Z008-1420_Z008-1410	6	143	-	-	-	Clean Only
Z008	Z008-1430_Z008-1410	6	187	-	-	-	Clean Only
Z008	Z008-1440_Z008-1410	6	157	0	0000	CMOM	CCTV
Z008	Z008-1450_Z008-1440	6	76	5	5200	Point Repair	CCTV
Z008	Z008-1460_Z008-1440	6	111	0	0000	CMOM	CCTV
Z008	Z008-1470_Z008-1460	6	109	2	2200	CMOM	CCTV
Z008	Z008-1480_Z008-1470	6	313	0	0000	CMOM	CCTV
Z008	Z008-1490_Z008-1480	6	156	5	5222	Point Repair	CCTV
Z008	Z008-1500_Z008-1480	6	104	0	0000	CMOM	CCTV
Z008	Z008-1970_Z008-0300	8	125	0	0000	CMOM	CCTV

PACP Scores and Sewer Line Recommendations							
Sub-Basin Name	Segment ID	Diameter	Length (lf)	PACP Structural Score	Str Quick Score	Recommended Rehab Action	Inspection Type
Z008	Z008-1980_Z008-1970	8	306	0	0000	CMOM	CCTV
Z008	Z008-1990_Z008-1980	8	51	0	0000	CMOM	CCTV
Z008	Z008-2000_Z008-1990	6	179	0	0000	CMOM	CCTV
Z008	Z008-2010_Z008-2000	6	102	0	0000	CMOM	CCTV
Z008	Z008-2020_Z008-0300	8	260	0	0000	CMOM	CCTV
Z008	Z008-2030_Z008-2020	8	177	-	-	-	Inaccessible
Z008	Z008-2040_Z008-2030	8	372	-	-	-	Inaccessible
Z008	Z008-2050_Z008-2040	8	165	0	0000	CMOM	CCTV
Z008	Z008-2060_Z008-2050	8	379	1	1100	CMOM	CCTV
Z008	Z008-2070_Z008-2060	8	40	0	0000	CMOM	CCTV
Z008	Z008-2080_Z008-2070	8	198	0	0000	CMOM	CCTV
Z008	Z008-2090_Z008-2080	8	144	0	0000	CMOM	CCTV
Z008	Z008-2100_Z008-2090	8	173	-	-	-	Inaccessible
Z008	Z008-2110_Z008-2100	8	161	-	-	-	Inaccessible
Z008	Z008-2120_Z008-2110	6	147	5	5100	Open Cut	CCTV
Z008	Z008-2130_Z008-2090	8	156	0	0000	CMOM	CCTV
Z008	Z008-2140_Z008-2130	8	173	0	0000	CMOM	CCTV
Z008	Z008-2150_Z008-2140	6	145	0	0000	CMOM	CCTV
Z008	Z008-2160_Z008-2140	8	154	0	0000	CMOM	CCTV
Z008	Z008-2170_Z008-2160	6	219	-	-	-	Clean Only
Z008	Z008-2180_Z008-2160	8	5	0	0000	CMOM	CCTV
Z008	Z008-2190_Z008-2180	8	121	4	4100	CMOM	CCTV
Z008	Z008-2200_Z008-2190	8	186	0	0000	CMOM	CCTV
Z008	Z008-2210_Z008-2200	8	268	0	0000	CMOM	CCTV
Z008	Z008-2220_Z008-2210	8	252	0	0000	CMOM	CCTV
Z008	Z008-2230_Z008-2220	8	160	0	0000	CMOM	CCTV
Z008	Z008-2240_Z008-2230	8	116	0	0000	CMOM	CCTV
Z008	Z008-2250_Z008-2240	6	179	0	0000	CMOM	CCTV
Z008	Z008-2260_Z008-2250	6	257	0	0000	CMOM	CCTV
Z008	Z008-2270_Z008-2240	6	369	0	0000	CMOM	CCTV
Z008	Z008-2280_Z008-2270	6	190	3	3100	CMOM	CCTV
Z008	Z008-2290_Z008-2070	8	219	0	0000	CMOM	CCTV
Z008	Z008-2300_Z008-2290	8	295	0	0000	CMOM	CCTV
Z008	Z008-2310_Z008-2300	6	81	0	0000	CMOM	CCTV
Z008	Z008-2320_Z008-2310	6	116	0	0000	CMOM	CCTV
Z008	Z008-2330_Z008-2300	6	110	0	0000	CMOM	CCTV
Z008	Z008-2340_Z008-2330	6	129	0	0000	CMOM	CCTV
Z008	Z008-2350_Z008-2330	6	199	0	0000	CMOM	CCTV
Z008	Z008-2360_Z008-2350	6	293	0	0000	CMOM	CCTV
Z008	Z008-2370_Z008-2360	6	65	0	0000	CMOM	CCTV
Z008	Z008-2380_Z008-1190	6	103	0	0000	CMOM	CCTV
Z008	Z008-2390_Z008-2380	6	200	0	0000	CMOM	CCTV
Z008	Z008-2400_Z008-2390	6	180	0	0000	CMOM	CCTV
Z008	Z008-2410_Z008-2400	6	167	0	0000	CMOM	CCTV

PACP Scores and Sewer Line Recommendations							
Sub-Basin Name	Segment ID	Diameter	Length (lf)	PACP Structural Score	Str Quick Score	Recommended Rehab Action	Inspection Type
Z008	Z008-2420_Z008-2410	6	34	0	0000	CMOM	CCTV
Z008	Z008-2430_Z008-2410	6	119	0	0000	CMOM	CCTV
Z008	Z008-2440_Z008-2430	6	131	0	0000	CMOM	CCTV
Z008	Z008-2450_Z008-2440	6	52	0	0000	CMOM	CCTV
Z008	Z008-2460_Z008-2450	6	472	4	4100	CMOM	CCTV
Z008	Z008-2470_Z008-2170	6	190	-	-	-	Clean Only
Z008	Z008-2480_Z008-2110	8	351	0	0000	CMOM	CCTV
Z008	Z008-2490_Z008-2480	8	174	0	0000	CMOM	CCTV
Z008	Z008-2500_Z008-2480	8	307	0	0000	CMOM	CCTV
Z008	Z008-2510_Z008-2500	8	155	0	0000	CMOM	CCTV
Z008	Z008-2520_Z008-2510	8	65	-	-	-	Clean Only
Z008	Z008-2530_Z008-2520	8	81	-	-	-	Clean Only
Z008	Z008-2540_Z008-2510	8	170	0	0000	CMOM	CCTV
Z008	Z008-2550_Z008-2540	8	186	0	0000	CMOM	CCTV
Z008	Z008-2560_Z008-2550	8	97	0	0000	CMOM	CCTV
Z008	Z008-2570_Z008-2560	8	192	0	0000	CMOM	CCTV
Z008	Z008-2580_Z008-2570	8	218	0	0000	CMOM	CCTV
Z008	Z008-2590_Z008-2580	8	163	-	-	-	Clean Only
Z008	Z008-2600_Z008-2590	8	140	0	0000	CMOM	CCTV
Z008	Z008-2610_Z008-2600	8	257	5	5100	CMOM	CCTV
Z008	Z008-2620_Z008-2590	8	307	5	514E	Point Repair	CCTV
Z008	Z008-2630_Z008-2620	8	249	5	514A	CMOM	CCTV
Z008	Z008-2640_Z008-2630	8	273	4	4100	CMOM	CCTV
Z008	Z008-2650_Z008-2640	8	312	0	0000	CMOM	CCTV
Z008	Z008-2660_Z008-2650	8	66	0	0000	CMOM	CCTV
Z008	Z008-2670_Z008-2680	8	242	0	0000	CMOM	CCTV
Z008	Z008-2680_Z008-2560	8	299	0	0000	CMOM	CCTV
Z008	Z008-2690_Z008-2680	8	116	0	0000	CMOM	CCTV
Z008	Z008-2700_Z008-2690	8	210	0	0000	CMOM	CCTV
Z008	Z008-2710_Z008-2700	8	158	0	0000	CMOM	CCTV
Z008	Z008-2720_Z008-2710	8	137	0	0000	CMOM	CCTV
Z008	Z008-2730_Z008-2720	8	129	0	0000	CMOM	CCTV
Z008	Z008-2740_Z008-2690	8	127	0	0000	CMOM	CCTV
Z008	Z008-2750_Z008-2740	8	155	0	0000	CMOM	CCTV
Z008	Z008-2760_Z008-2750	8	152	0	0000	CMOM	CCTV
Z008	Z008-2770_Z008-2760	8	334	0	0000	CMOM	CCTV
Z008	Z008-2780_Z008-2750	8	201	0	0000	CMOM	CCTV
Z008	Z008-2790_Z008-2120	6	86	0	0000	CMOM	CCTV
Z008	Z008-2800_Z008-2790	6	77	0	0000	CMOM	CCTV
Z008	Z008-2810_Z008-0270	8	136	0	0000	CMOM	CCTV
Z008	Z008-2820_Z008-2810	8	96	1	1100	CMOM	CCTV
Z008	Z008-2830_Z008-2820	8	190	0	0000	CMOM	CCTV
Z008	Z008-2840_Z008-2830	8	205	0	0000	CMOM	CCTV
Z008	Z008-2850_Z008-2840	8	91	0	0000	CMOM	CCTV

PACP Scores and Sewer Line Recommendations							
Sub-Basin Name	Segment ID	Diameter	Length (lf)	PACP Structural Score	Str Quick Score	Recommended Rehab Action	Inspection Type
Z008	Z008-2870_Z008-0345	8	49	0	0000	CMOM	CCTV
Z008	Z008-2880_Z008-2870	8	142	-	-	-	Inaccessible
Z008	Z008-2890_Z008-2880	8	126	0	0000	CMOM	CCTV
Z008	Z008-2900_Z008-2890	8	130	0	0000	CMOM	CCTV
Z008	Z008-2910_Z008-0277	8	75	0	0000	CMOM	CCTV
Z008	Z008-3160_Z008-0150	12	271	-	-	-	Clean Only
Z008	Z008-3170_Z008-3160	12	300	-	-	-	Clean Only
Z008	Z008-3180_Z008-3170	12	287	-	-	-	Clean Only
Z008	Z008-3190_Z008-3180	12	258	-	-	-	Clean Only
Z008	Z008-4000_Z008-3190	12	154	-	-	-	Clean Only
Z008	Z008-4010_Z008-4000	12	306	-	-	-	Clean Only
Z008	Z008-4020_Z008-4010	12	180	-	-	-	Clean Only
Z008	Z008-4030_Z008-4020	12	176	-	-	-	Clean Only
Z008	Z008-4040_Z008-4030	12	39	-	-	-	Clean Only
Z008	Z008-4050_Z008-4040	12	327	-	-	-	Clean Only
Z008	Z008-4060_Z008-4050	10	141	-	-	-	Clean Only
Z008	Z008-4070_Z008-4060	10	311	-	-	-	Clean Only
Z008	Z008-4080_Z008-4070	10	311	-	-	-	Clean Only
Z008	Z008-4090_Z008-4080	10	140	-	-	-	Clean Only
Z008	Z008-4100_Z008-4090	10	225	-	-	-	Clean Only
Z008	Z008-4110_Z008-4100	10	164	-	-	-	Clean Only
Z008	Z008-4120_Z008-4110	10	228	-	-	-	Clean Only
Z008	Z008-4130_Z008-4120	10	166	-	-	-	Clean Only
Z008	Z008-4140_Z008-4130	10	147	-	-	-	Clean Only
Z008	Z008-4150_Z008-4140	10	191	-	-	-	Clean Only
Z008	Z008-4160_Z008-4150	10	223	-	-	-	Clean Only
Z008	Z008-4170_Z008-4160	10	155	-	-	-	Clean Only
Z008	Z008-4180_Z008-4170	10	130	-	-	-	Clean Only
Z008	Z008-4190_Z008-4180	10	153	-	-	-	Clean Only
Z008	Z008-4200_Z008-4190	10	75	-	-	-	Clean Only
Z008	Z008-4210_Z008-4200	8	275	-	-	-	Inaccessible
Z008	Z008-4220_Z008-4210	8	111	-	-	-	Clean Only
Z008	Z008-4230_Z008-4220	8	169	-	-	-	Clean Only
Z008	Z008-4240_Z008-4230	8	309	-	-	-	Clean Only
Z008	Z008-4250_Z008-4240	8	318	-	-	-	Clean Only
Z008	Z008-4260_Z008-4250	8	264	-	-	-	Clean Only
Z008	Z008-4270_Z008-4260	8	381	-	-	-	Clean Only
Z008	Z008-4280_Z008-4270	8	84	-	-	-	Clean Only
Z008	Z008-4290_Z008-4280	8	151	-	-	-	Clean Only
Z008	Z008-4300_Z008-4290	8	356	-	-	-	Clean Only
Z008	Z008-4310_Z008-4300	8	263	-	-	-	Clean Only
Z008	Z008-4320_Z008-4310	8	77	-	-	-	Clean Only
Z008	Z008-4330_Z008-4320	8	283	-	-	-	Clean Only
Z008	Z008-4340_Z008-4330	8	322	-	-	-	Clean Only

PACP Scores and Sewer Line Recommendations							
Sub-Basin Name	Segment ID	Diameter	Length (lf)	PACP Structural Score	Str Quick Score	Recommended Rehab Action	Inspection Type
Z008	Z008-4350_Z008-4250	8	73	-	-	-	Clean Only
Z008	Z008-4360_Z008-4350	8	130	-	-	-	Clean Only
Z008	Z008-4370_Z008-4360	8	339	-	-	-	Clean Only
Z008	Z008-4380_Z008-4370	8	132	-	-	-	Clean Only
Z008	Z008-4390_Z008-4380	8	182	-	-	-	Clean Only
Z008	Z008-4400_Z008-4390	8	201	-	-	-	Clean Only
Z008	Z008-4410_Z008-4400	8	194	-	-	-	Clean Only
Z008	Z008-4420_Z008-4350	8	61	-	-	-	Clean Only
Z008	Z008-4430_Z008-4420	8	215	-	-	-	Clean Only
Z008	Z008-4440_Z008-4430	8	83	-	-	-	Clean Only
Z008	Z008-4450_Z008-4440	8	185	-	-	-	Clean Only
Z008	Z008-4460_Z008-0795	6	399	0	0000	CMOM	CCTV
Z008	Z008-4470_Z008-4460	6	127	0	0000	CMOM	CCTV
Z008	Z008-4480_Z008-0795	6	292	0	0000	CMOM	CCTV
Z008	Z008-4490_Z008-4480	6	29	0	0000	CMOM	CCTV
Z008	Z008-4500_Z008-4490	6	100	1	1100	CMOM	CCTV
Z008	Z008-4510_Z008-4500	6	124	0	0000	CMOM	CCTV
Z008	Z008-4520_Z008-4480	6	221	0	0000	CMOM	CCTV
Z008	Z008-4540_Z008-4530	6	168	0	0000	CMOM	CCTV
Z008	Z008-4550_Z008-4530	6	79	0	0000	CMOM	CCTV
Z008	Z008-4560_Z008-4550	6	133	0	0000	CMOM	CCTV
Z008	Z008-4570_Z008-4560	6	118	0	0000	CMOM	CCTV
Z008	Z008-4580_Z008-4570	6	94	0	0000	CMOM	CCTV
Z008	Z008-4590_Z008-4580	6	93	0	0000	CMOM	CCTV
Z008	Z008-4600_Z008-4590	6	76	0	0000	CMOM	CCTV
Z008	Z008-4610_Z008-4590	6	81	0	0000	CMOM	CCTV
Z008	Z008-4620_Z008-4580	6	124	0	0000	CMOM	CCTV
Z008	Z008-4630_Z008-4620	6	44	0	0000	CMOM	CCTV
Z008	Z008-4640_Z008-4630	6	123	0	0000	CMOM	CCTV
Z008	Z008-4650_Z008-4640	6	70	5	5200	Point Repair	CCTV
Z008	Z008-4660_Z008-4650	6	187	1	1200	CMOM	CCTV
Z008	Z008-4670_Z008-4660	6	342	0	0000	CMOM	CCTV
Z008	Z008-4680_Z008-4670	6	31	0	0000	CMOM	CCTV
Z008	Z008-4690_Z008-4640	6	117	0	0000	CMOM	CCTV
Z008	Z008-4700_Z008-4690	6	105	0	0000	CMOM	CCTV
Z008	Z008-4710_Z008-4690	6	254	0	0000	CMOM	CCTV
Z008	Z008-4720_Z008-4710	6	265	1	1500	CMOM	CCTV
Z008	Z008-4730_Z008-4720	6	101	2	2100	CMOM	CCTV
Z008	Z008-4740_Z008-4560	6	227	2	2100	CMOM	CCTV
Z008	Z008-4750_Z008-4740	6	219	0	0000	CMOM	CCTV
Z008	Z008-4760_Z008-4750	6	80	0	0000	CMOM	CCTV
Z008	Z008-4770_Z008-4760	6	189	0	0000	CMOM	CCTV
Z008	Z008-4780_Z008-4770	6	283	0	0000	CMOM	CCTV
Z008	Z008-4790_Z008-4780	6	86	3	3100	CMOM	CCTV

PACP Scores and Sewer Line Recommendations							
Sub-Basin Name	Segment ID	Diameter	Length (lf)	PACP Structural Score	Str Quick Score	Recommended Rehab Action	Inspection Type
Z008	Z008-4800_Z008-4780	6	86	0	0000	CMOM	CCTV
Z008	Z008-4810_Z008-4780	6	646	0	0000	CMOM	CCTV
Z008	Z008-4820_Z008-4810	6	370	-	-	-	Clean Only
Z008	Z008-4830_Z008-4810	6	311	-	-	-	Clean Only
Z008	Z008-4840_Z008-4810	6	231	0	0000	CMOM	CCTV
Z008	Z008-4850_Z008-4840	6	105	-	-	-	Clean Only
Z008	Z008-4860_Z008-4840	6	232	0	0000	CMOM	CCTV
Z008	Z008-4870_Z008-4860	6	120	1	1100	CMOM	CCTV
Z008	Z008-4880_Z008-4870	6	15	0	0000	CMOM	CCTV
Z008	Z008-4890_Z008-4880	6	159	0	0000	CMOM	CCTV
Z008	Z008-4900_Z008-4870	6	255	0	0000	CMOM	CCTV
Z008	Z008-4910_Z008-4900	6	65	0	0000	CMOM	CCTV
Z008	Z008-4920_Z008-4900	6	16	-	-	-	Inaccessible
Z008	Z008-4930_Z008-4920	6	122	0	0000	CMOM	CCTV
Z008	Z008-4940_Z008-4600	6	64	0	0000	CMOM	CCTV
Z008	Z008-4950_Z008-4940	6	91	0	0000	CMOM	CCTV
Z008	Z008-4960_Z008-0165	8	123	-	-	-	Clean Only
Z008	Z008-4970_Z008-4960	8	188	-	-	-	Clean Only
Z008	Z008-4980_Z008-4970	8	126	-	-	-	Clean Only
Z008	Z008-4990_Z008-4980	8	344	-	-	-	Clean Only
Z008	Z008-5000_Z008-4990	8	153	-	-	-	Clean Only
Z008	Z008-5010_Z008-5000	8	114	-	-	-	Clean Only
Z008	Z008-5020_Z008-5010	8	147	-	-	-	Clean Only
Z008	Z008-5030_Z008-4960	8	158	-	-	-	Clean Only
Z008	Z008-5040_Z008-5030	8	251	-	-	-	Clean Only
Z008	Z008-5050_Z008-5040	8	125	-	-	-	Clean Only
Z008	Z008-5060_Z008-4980	8	248	-	-	-	Clean Only
Z008	Z008-5070_Z008-5060	8	369	-	-	-	Clean Only
Z008	Z008-5080_Z008-5070	8	115	-	-	-	Clean Only
Z008	Z008-5090_Z008-5080	8	105	-	-	-	Clean Only
Z008	Z008-5100_Z008-5090	8	273	-	-	-	Clean Only
Z008	Z008-5110_Z008-5100	8	193	-	-	-	Clean Only
Z008	Z008-5120_Z008-5110	8	183	-	-	-	Clean Only
Z008	Z008-5130_Z008-5120	8	195	-	-	-	Clean Only